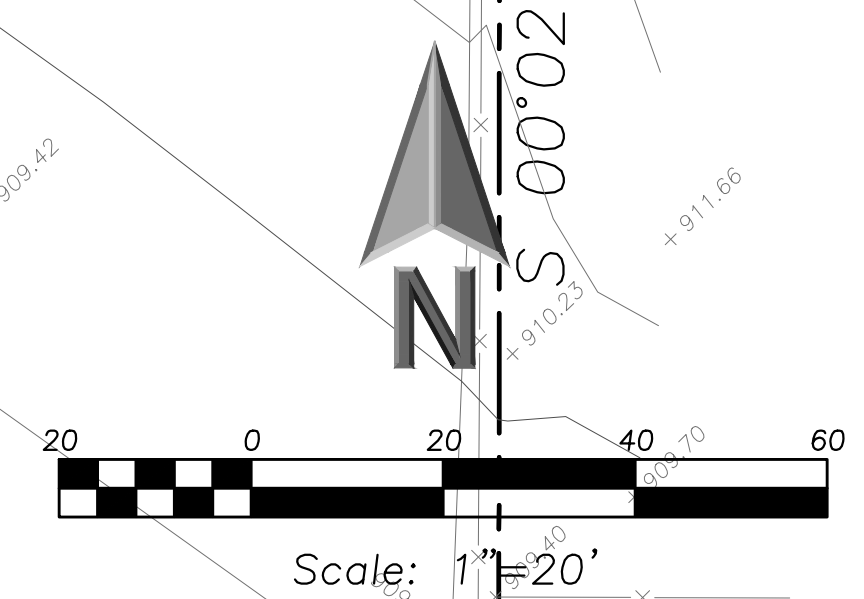


EEA - P:\Melanie\Cashman Stahler - Capron Elem Parking Lot\Drawings\Site Plan.dwg
 Plotted: 6/07/21 @ 3:13pm By: mcarollo



**ERIKSSON
ENGINEERING
ASSOCIATES, LTD.**

145 COMMERCE DRIVE, SUITE A
 GRAYSLAKE, ILLINOIS 60030
 PHONE (847) 223-4804
 FAX (847) 223-4864
 EMAIL INFO@EEA-LTD.COM
 PROFESSIONAL DESIGN FIRM
 LICENSE NO. 184-003220
 EXPIRES: 04/30/2021

**CAPRON ELEMENTARY
SCHOOL - 2021 WORK**
 200 N WOOSTER STREET
 CAPRON, ILLINOIS

Reserved for Seal:

No.	Date	Description
	06/07/21	Coordination Set

© ERIKSSON ENGINEERING ASSOCIATES, LTD. 2021
 THIS PLAN & SPEC. ARE THE PROPERTY OF ERIKSSON ENGINEERING ASSOCIATES, LTD.
 NO REPRODUCTION OR USE OF ANY PART OF THIS WORK IS PERMITTED WITHOUT THE WRITTEN
 CONSENT OF ERIKSSON ENGINEERING ASSOCIATES, LTD.

Design By: MC Approved By: MR Date: 06/07/21

Sheet Title:
**GRADING AND
PAVING PLAN**

Sheet No:
C401