

**ILLINOIS STATE ADVISORY COUNCIL
ON THE EDUCATION OF
CHILDREN WITH DISABILITIES**

**Illinois State Board of Education
100 North First Street
Springfield, IL 62777
Board Room (4th Floor)**

**COMMITTEE OF THE WHOLE
October 2, 2013
2:00 p.m.**

I	Introductions	Beth Conran
II	Professional Development Grant	Kathy Cox
III	Withdrawals – North Boone CUSD #200 and Belvidere CUSD #100	Boyd Ferguson
IV	Review Business Meeting Agenda	Beth Conran
V	Other	Beth Conran
VI	Adjournment	Beth Conran

Reasonable accommodations are available upon request. Individuals requiring special accommodations should contact the Illinois State Board of Education (voice: 217/782-5589 and TTY: 217/782-1900) at least one week prior to the meeting date to allow time for making accommodations.



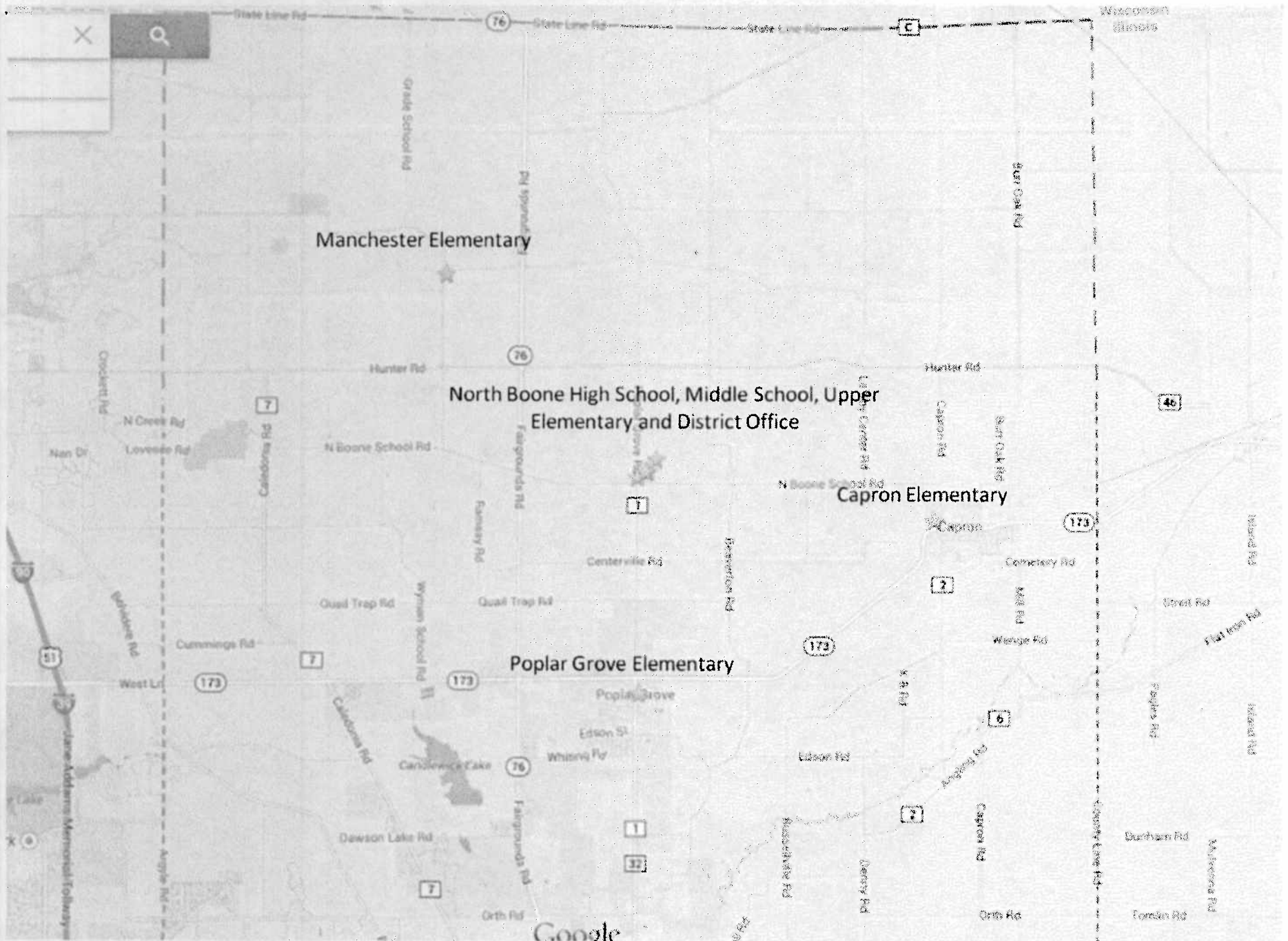
North Boone Community Unit School District 200 Comprehensive Plan

October 2, 2013
ISAC Committee Presentation
Springfield, IL

North Boone CUSD 200

North Boone Community Unit School District 200 serves approximately 1750 students in pre-school through high school in the villages of Caledonia, Capron and Poplar Grove as well as the northern tier of unincorporated Boone County, Illinois.





NORTH BOONE CUSD200 SCHOOL DISTRICT

Rational for Dissolution of the Special Education Cooperative

- Since 2010, Belvidere D100 effectively pulled all of its students out of the cooperative programs restructuring its internal programs to provide for special education students. There was an unsuccessful attempt to dissolve the cooperative at that time.
- At this time, North Boone is fully supportive of the dissolution of the cooperative as it hasn't provided any student programming since 2010.
- D100 and North Boone have an intergovernmental agreement in place to share student programming and transportation services were that is in the student's best interest and/or an efficient service method.

Benefits to North Boone CUSD 200

- Provide services to students in home district.
- Direct hiring and supervision of staff.
- Ability to expand programs and services to meet the needs of the students in the district.
- Greater professional development opportunities for staff with the ability to implement district wide initiatives.
- Greater flexibility to partner with other agencies to provide more appropriate services.

Projected Staffing Implications

- In the 2013-2014 school year North Boone CUSD 200 hired a Special Education Director.
- Prior to the beginning of the 2014-2015 year, the appropriate staffing of psychologist, speech pathologists and social workers will be secured.
- North Boone CUSD 200 will continue to contract occupational therapist, physical therapist and hearing and vision itinerant services through the 2015 school year. This includes technical assistance and supervision for these service areas.

Notification to the Public

In the 2010-2011 school year North Boone School District began the process of expanding their programs and services for students with special needs at the elementary level which allowed more students to return to North Boone.

March 8th, 2011 a parent dinner and informational meeting was held to get input from families. Another family event was held on February 22nd, 2013.

In 2011-2012 programs were added at the high school level and in 2013-2014 programs were expanded to the Upper elementary and Middle Schools.

During the 2012-2013 school year the decision came to dissolve the cooperative.

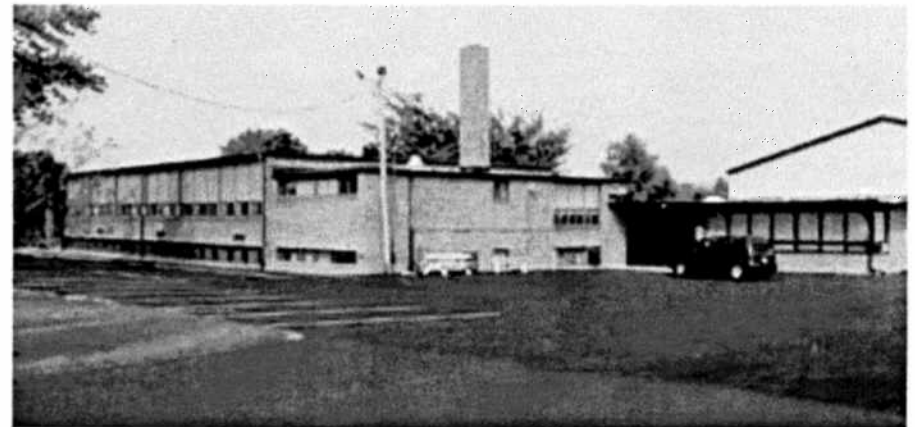
Newspaper articles appeared on January 24th, 2013, January 25th, 2013 and March 8th, 2013.

Implications on Students

- Due to the IGA between D100 and D200, the dissolution of the cooperative will have no negative impact on students.
- North Boone as a stand along entity will have more control over the placement of students and staff and additional options that were not previously available to the district.
- This will give D200 the control to ensure that the students are being provided their education within the least restrictive environment as determined by the IEP team.

Special Education Disability Distribution for District

- Autism 4%
- Deaf and Blindness/Deafness/Hearing Impairment 1%
- Emotional Disability 5%
- Intellectual Disability 4%
- Multiple Disabilities 1%
- Orthopedic Impairment 0%
- Other Health Impairment 13%
- Specific Learning Disability 33%
- Speech/Language Impairment 25%
- Traumatic Brain Injury 0%
- Visual Impairment 2%



Special Education Programs

North Boone CUSD 200 provides a continuum of placement options and services for students.

- Rtl Team
- Early Childhood
- Inclusion
- Instructional Support
- Oasis Room
- Intensive Programs
- Therapeutic Day School (outside of district)
- Residential Placement (outside of district)

Special Education Programs

	Capron Elementary	Manchester Elementary	Poplar Grove Elementary	North Boone Upper Elementary/ Middle School	North Boone High School
RtI	X	X	X	X	X
Early Childhood	X				
Inclusion	X	X	X	X	X
Instructional Support	X	X	X	X	X
Oasis Room			X	X	X
Intensive Programs			X	X	X

Project UNIFY School District

North Boone CUSD 200 has become a Project UNIFY school district. Project UNIFY is a division of Special Olympics and promotes inclusion and respect for all students.

By participating in this initiative district wide we are allowing students and educators to be agents of change. Each school will be participating in different sports and activities to build leadership skills and to promote disability awareness.



CPI Nonviolent Crisis Prevention Intervention Training

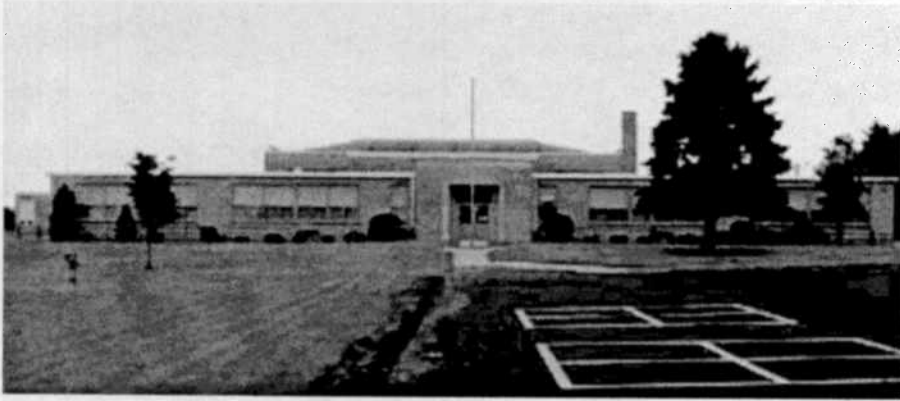
North Boone CUSD 200 believes the welfare and safety of the staff and students is of utmost importance. With this in mind all staff are encouraged to participated in CPI's Nonviolent Crisis Prevention Intervention Training.

Community Involvement

- RAMP is a center for independent living that provides transition services to our students with disabilities.
- Boone County Transportation is a service that provides public transportation to students and adults within the community.
- Bravehearts Therapeutic Riding facility provides equine assisted activities and therapies. The special education students from North Boone will visit this facility to volunteer and complete work tasks along with activities such as caring for the animals.
- Belvidere Park District provides in-class lessons to students regarding leisure education.
- Student in the intensive program with the assistance of related staff use the Boone County Transportation to visit the local grocery store to plan and shop for ingredients for their cooking lessons.

Ongoing Evaluation

- An ongoing evaluation of the special education services and continuum of services will be reviewed and monitored by a variety of activities throughout the school year to ensure the needs of the student population are being meet.
- North Boone contracts with ECRA to provide ongoing programmatic evaluations related to student achievement.



Thank you!

