

**BELVIDERE COMMUNITY UNIT
DISTRICT 100
COMPREHENSIVE PLAN**
October 2, 2013

PRESENTERS

- o Matthew Ross – Director Boone County Special Education Cooperative/Belvidere District 100
- o Sheri Smith – Assistant Superintendent of Student Services for District 100

COMPREHENSIVE PLAN

- o About District 100
- o Rationale for Withdrawal/Dissolution
- o District 100 Organizational Structure
- o District 100 Special Education Programs
- o Continuum of Services

ABOUT BELVIDERE DISTRICT 100

- o Located in Boone County, just east of Rockford
- o Large Unit District
- o About 8300 Students
- o About 1250 Students with IEPs
 - 15% of students have IEPs
- o \$91 Million Budget
 - 2013-2014
- o \$14.8 Million spent on Special Education
 - 2011-2012

ABOUT DISTRICT 100

- o 2 Comprehensive High Schools
- o 2 Middle Schools (6-8)
- o 1 STEM Academy Magnet School (K-8)
- o 5 Elementary Schools (K-5)

RATIONALE FOR WITHDRAWAL/DISSOLUTION

- o District 100 provides its own individual programs for its students and provides all staffing for such programs
- o District 100 provides its own Transition and Extended School Year (ESY) programs to ensure Least Restrictive Environment (LRE)
- o District 100 provides all of its own special education programming, with the exception of public/private facility and residentially placed students
- o BCSEC currently flows all but 1% of its IDEA Grant allotment to member districts

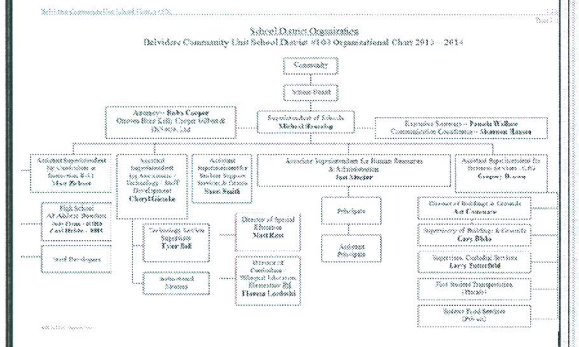
BENEFITS FOR WITHDRAWAL/DISSOLUTION

- o District 100 and District 200 have been servicing students as stand alone districts for the last 3 years under the umbrella of the Boone County Special Education Cooperative.
- o District 100 currently hires/contracts all but two special education staff directly
- o Grant dollars can be managed by individual districts without Coop oversight
- o Professional development can be managed and allotted by individual districts at their discretion
- o Streamlining processes to individual districts will increase productivity of staff in both districts

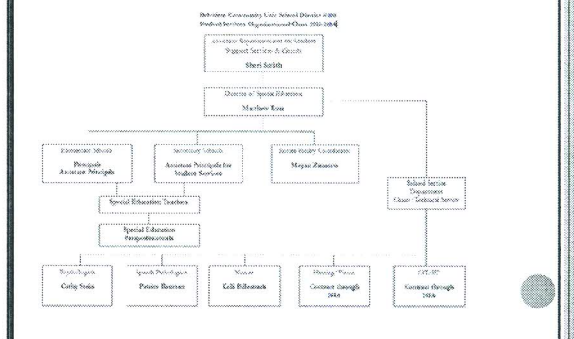
PROJECTED FINANCIAL IMPLICATIONS

- o The BCSEC flows all grant money to member districts with the exception of the costs associated with the IEP management system.
- o Without the umbrella of the Coop, each district's finances will not only be maintained (Maintenance of Effort), but used more efficiently.

DISTRICT 100 ORGANIZATIONAL CHART



STUDENT SERVICES ORGANIZATIONAL CHART



ORGANIZATIONAL STRUCTURE

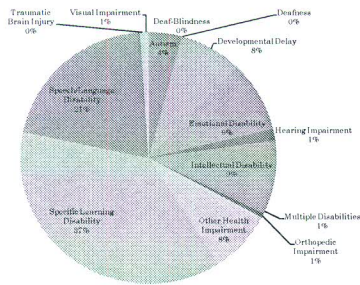
Student Services Department

- o Assistant Superintendent for Student Services
- o Director of Special Education
 - 3 Administrative Assistants
- o Elementary – 6 Principals and 3 Assistant Principals
- o Secondary – 4 Assistant Principals for Student Services
- o Special Education Teachers – Pre-K through Secondary
- o Paraprofessionals – Pre-K through Secondary
- o 11 Speech Pathologists
- o 8 School Psychologists
- o 5 Social Workers
- o 1 Vision Itinerant

SPECIAL EDUCATION DISABILITY DISTRIBUTION 2010-2011

- o Autism - 4.25%
- o Deafness - 0.00%
- o Deaf-Blindness - 0.00%
- o Developmental Delay - 7.85%
- o Emotional Disability - 9.13%
- o Hearing Impairment - 1.52%
- o Intellectual Disability - 8.81%
- o Multiple Disabilities - 0.72%
- o Orthopedic Impairment - 0.56%
- o Other Health Impairment - 8.81%
- o Specific Learning Disability - 37.42%
- o Speech/Language Disability - 20.59%
- o Traumatic Brain Injury - 0.48%
- o Visual Impairment - 0.56%

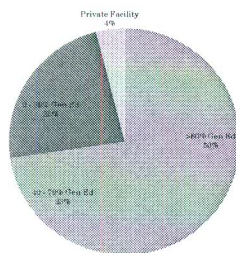
SPECIAL EDUCATION DISABILITY DISTRIBUTION 2010-2011



SPECIAL EDUCATION EDUCATIONAL ENVIRONMENT DISTRIBUTION 2010-2011

- o Code 01 – Gen Ed 80 - 100% 49.3%
- o Code 02 – Gen Ed 40 - 79% 23.3%
- o Code 03 – Gen Ed 0 - 39% 23.3%
- o Code 08/09 – Private Facility 4.0%

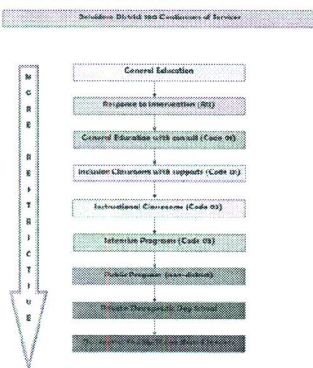
SPECIAL EDUCATION EDUCATIONAL ENVIRONMENT DISTRIBUTION 2010-2011



SPECIAL EDUCATION PROGRAMS

- o Resource Programs
- o Cross-Categorical Programs
- o Emotional Disabilities Programs
- o Autism Programs
- o Life Skills Programs
- o Community – Transitions Programs
- o 3-5 Year Old Program
- o ESY Program
- o Private & Public Day Programs
- o Residential/Homebound Programs

CONTINUUM OF SERVICES



CONTINUUM OF SERVICES

- o Available from Pre-K until the age of 22
- o Allows for students to be educated in their LRE
- o Allows for the district to best meet the needs of its students
- o Allows for students to gain as many transition skills as possible

COMMUNITY/PARENT PARTNERSHIPS

- o Belvidere Special Education Parent Staff Organization (PSO)
- o Belvidere Park District and Northlands Association for Special Recreation (NASR)
- o Belvidere County Public Transportation
- o RAMP
- o Growth Enterprises
- o Camelot Therapeutic Day Schools

STAFF PLANNING FOR 2014-2015

- o Contract Hearing Itinerant through NIA
- o Hire state approved Director of Special Education
- o Continue to contract the following services through NIA
 - OT/PT
 - Autism and Assistive Tech Consultation
 - Technical Assistance for Hearing/Vision/Speech

EXPANSION OF PROGRAMS & SERVICES

- o Looking to expand our transition services; including expanding current opportunities for all students

THANK YOU

- o District 100 would like to thank the ISAC Board for their time and consideration
- o Thank you to Boyd Ferguson for your guidance in this process