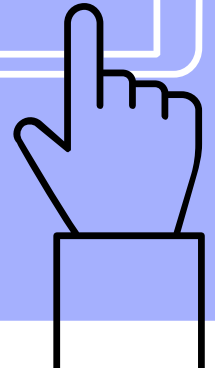
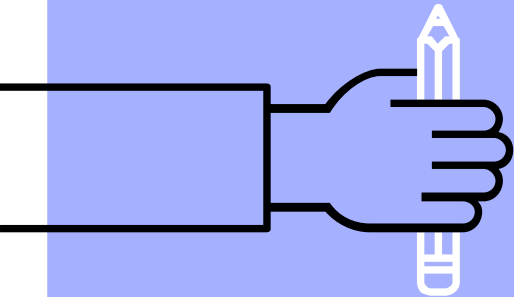
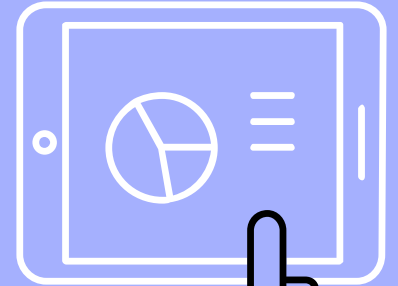
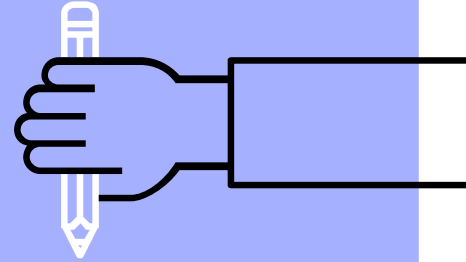


Technology Plan

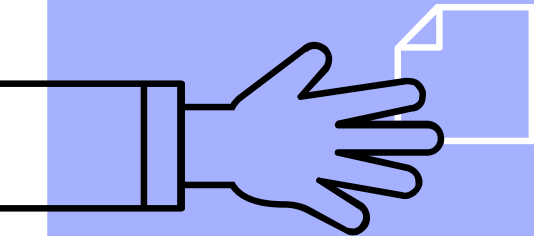
North Boone CUSD
200



North Boone Mission statement



The Mission of the North Boone educational community is to provide students with exceptional experiences that continuously develop their minds and characters, fostering life-long learning and responsible citizenship.



Technology Beliefs

- Enhance Student Achievement
- Promotes Student Engagement
- Support Instructional Goals
- Support Teaching Strategies
- Support Administrative Business, Data and Reporting Functions
- Enhance All District Communication
- Prepares Students to be Successful Post High School through Technical Fluency





Business Department &
Administrative Technology



State Student Information System (SIS)

Illinois State Board of Education has all school districts share data through the Student Information System (SIS).

This system is used to meet accountability and reporting requirements set forth by Illinois State Board of Education.

All students have a unique SIS number



State Student Information System (SIS)

Due to the demands and information required by SIS the information from PowerSchool is filtered and put in the correct format for upload.



PowerSchool

PowerSchool by design has the ability to obtain information for a variety of individuals. Grades, fees, schedules, etc.



Administration, Office Staff, Teachers and Related Service Staff

State Student Information System (SIS)



PowerSchool



SchoolMessenger

Communication Tool

Shares information with
PowerSchool



MealsPlus

Meal System

Shares
information with
PowerSchool



Embrace

Special
Education
System

Shares
information
with
PowerSchool



VersaTrans

Transportation
System

Shares
information with
PowerSchool



e-funds

SchoolMessenger

Emergency messaging and Mass Notification Software

<https://www.schoolmessenger.com/powerschool>

North Boone utilizes this program at a building as well as district level to share information with parents.



MealsPlus

Lunch Program

<http://www.mealsplus.com/>

All of the schools use MealsPlus to track point of sale purchases by students



Embrace (PowerIEP)

Special Education Software

www.embraceeducation.com

Online software to manage and create IEPs and 504 documents. North Boone also uses this program as part of medicaid billing for related service staff.



VersaTrans

Routing and Planning software for transportation

<https://www.tylertech.com/products/versatrans/routing-planning>

North Boone will begin to use this program for routing beginning in 2019.



e-funds

Online payment option for schools

<http://www.efundsforschools.com/>

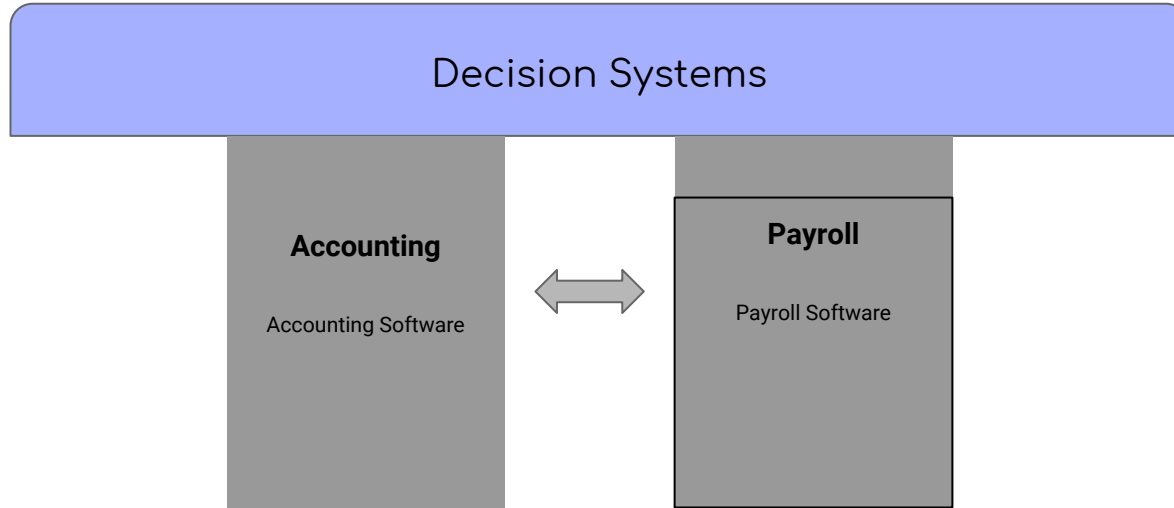
Currently using with our lunch program.

*This program is being evaluated to see if it is the best option moving forward with online registration.

(One place for all school credit card transactions.)

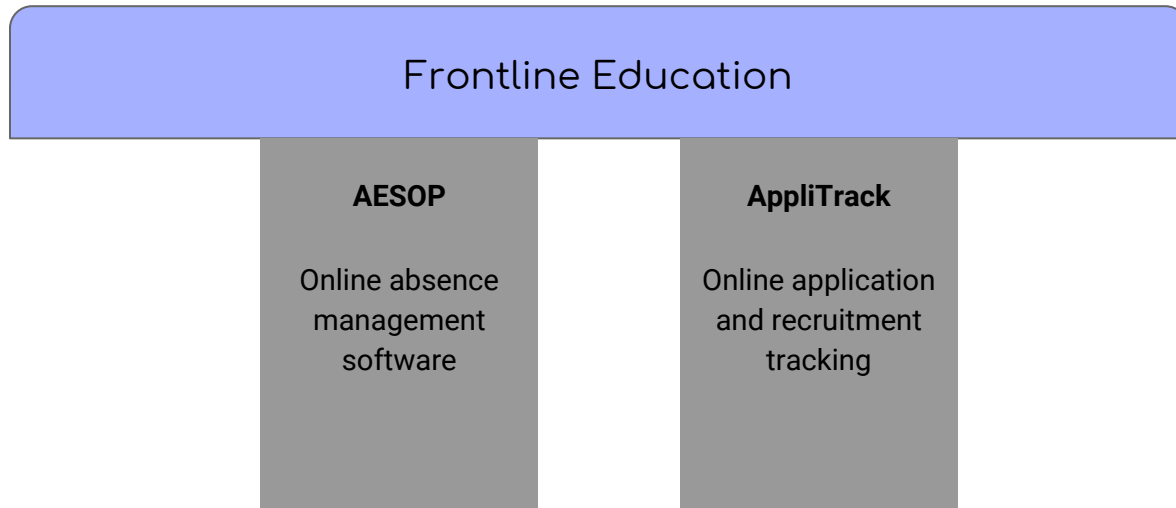


Financial Software



This program is a stand alone program due to the sensitive nature of the information it contains.

Human Resources

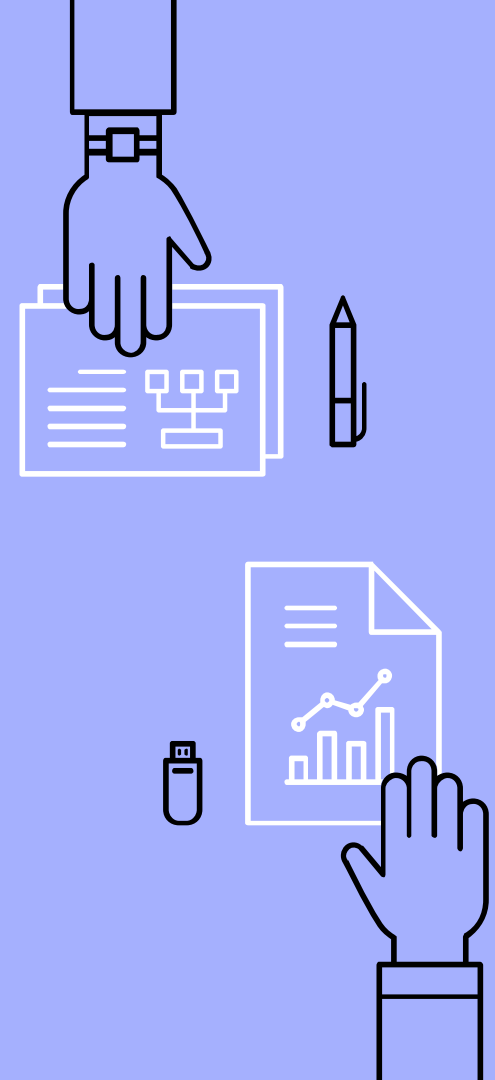


Frontline recently took over both AESOP and AppliTrack and the programs will be launched as Frontline in December of 2018
This program is a standalone program.

Other Programs

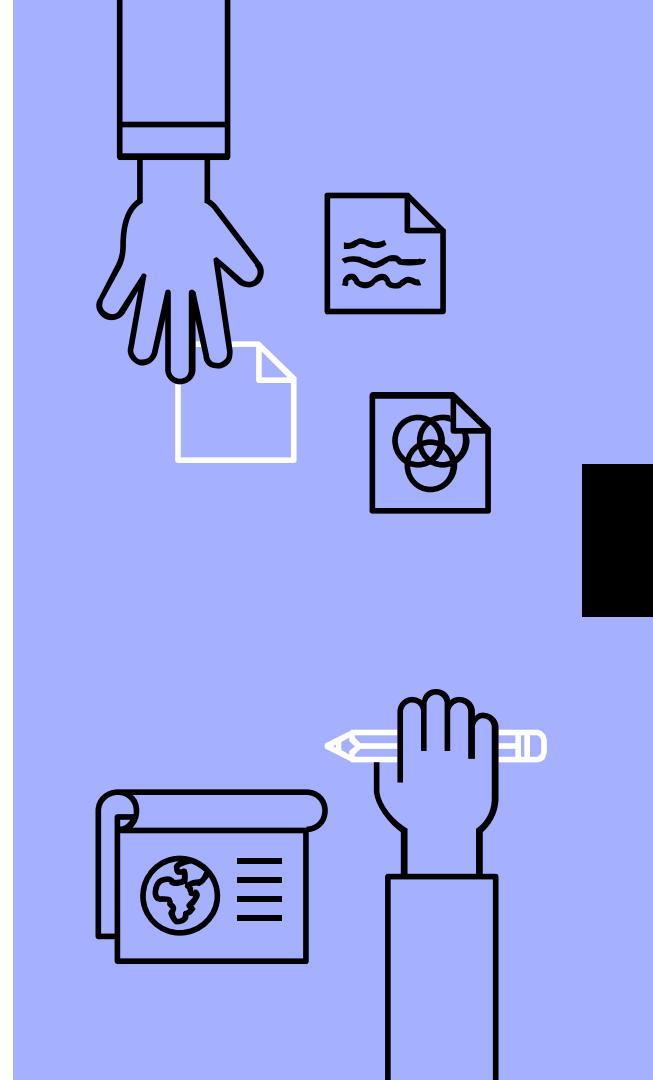
PowerSchool partners with other organizations listed at the website below.

<https://www.powerschool.com/company/partners/partner-list/>



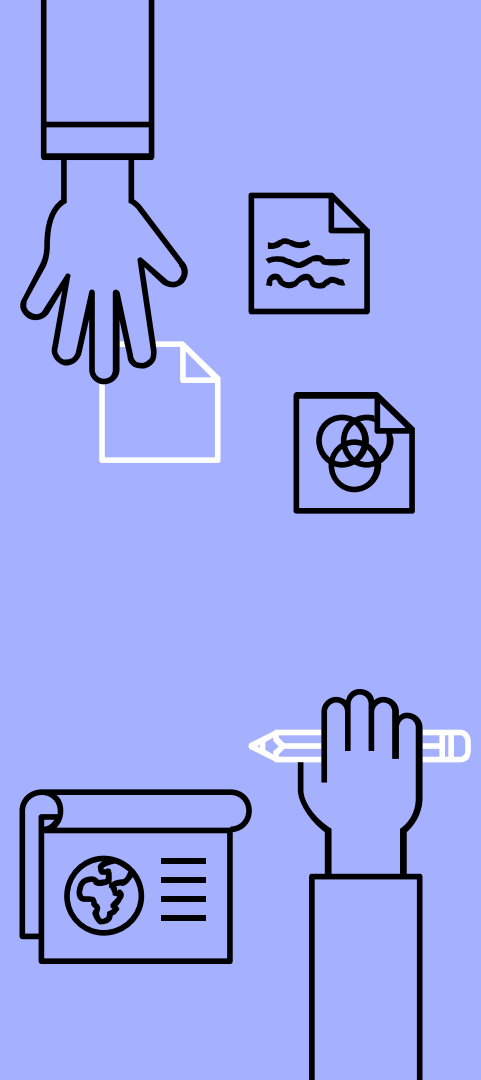
Communication-Internal

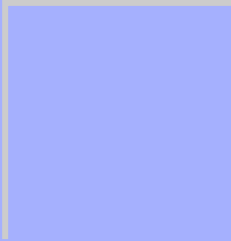
- ▶ Jer-Sher (Ed Tech)
- ▶ Distribution Email Groups
- ▶ Google Platform




Communication-External

- ▶ Market Volt Email Blast
- ▶ Twitter
- ▶ Weekly Wrap Up (Blogger)
- ▶ Facebook
- ▶ Instagram
- ▶ District Calendar
- ▶ Remind Text
- ▶ Seesaw
- ▶ Class Dojo
- ▶ District Newsletter
- ▶ District Website
- ▶ Teacher Websites
- ▶ Learning Management System
- ▶ Communication





Instructional Technology



Benefits of Technology

- ▶ Accelerates, amplifies and expands the impact of effective teaching practices
- ▶ Increases access to learning opportunities for all students (Differentiation)
- ▶ Bridges inequities among students (MTSS)
- ▶ Provides all learners with online access and better learning opportunities and various options
- ▶ Increases the level of engagement, empowerment, and participation



Benefits to NBCUSD #200

- ▶ Curriculum
 - ELA- Access to a variety to texts
 - Math Online curriculum including differentiation and support resources at home
 - Science- Digital Notebooks
 - Social Studies- Global Learning and Virtual Field Trips
 - Many more opportunities (benefits) for digital learning across all curricular areas



Benefits to NBCUSD #200

- ▷ Instruction
- ▷ Supports individualized instruction for differentiation
- ▷ Assessment
 - Assessment Data readily available
 - Exit Slips (Google Forms)
 - Schoology and Mastery Manager
 - Instant feedback driving instruction
 - MAP, ACCESS, & PARCC Assessment windows are shortened; increasing instructional time

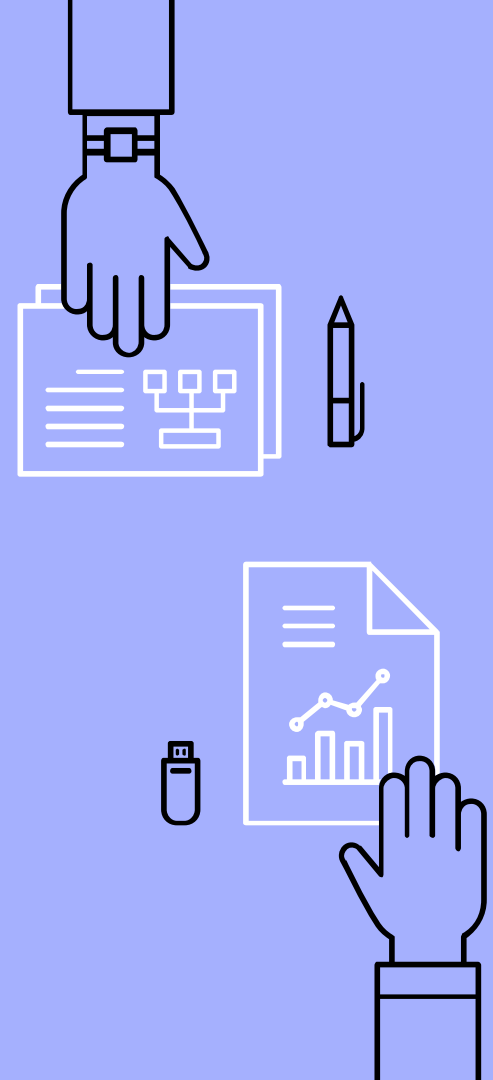
▷



Curriculum, Instruction & Assessment

Provide opportunities for all schools to use digital and online assessment systems that provide all students and teachers with real-time feedback in ways that increase the rate and depth of learning, and that enable data-informed instructional decision making

- ▶ Evidence of digital and online assessments. (Diagnostic, Formative, Adaptive and Summative)



Cons for Having Devices

- ▶ Screen time
- ▶ Time and Resources for Adequate Professional Development
- ▶ Finances
- ▶ Reliance on Technology
- ▶ Inappropriate Use by Students
- ▶ Could Increase Need for Tech Support



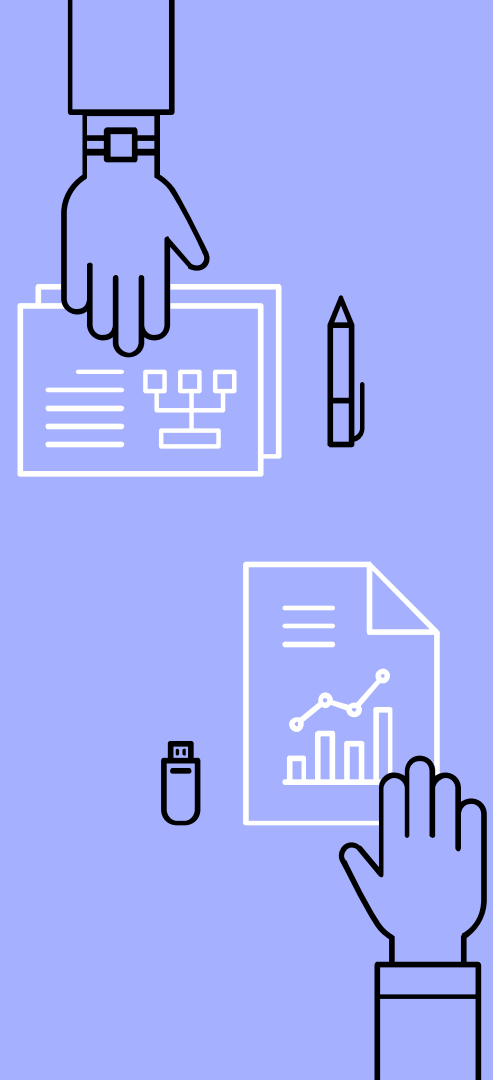
Pros for Having Devices

- ▶ Areas well-suited for technology use
 - ▷ Writing Process
 - ▷ Research
 - ▷ Assistive Technology
 - ▷ Technology Based Interventions
 - ▷ Multimedia & Creative Applications
- ▶ Device availability doesn't impede instruction and lesson planning during the assessment windows for PARCC, MAP, ACCESS, etc.
- ▶ Device availability frees up Administration to focus more on being an instructional leader, as opposed to spending a large amount of time coordinating the logistics of testing and scheduling.



Current Hardware in Our Buildings

<http://www.nbcusd.org/district/instructional-technology/technology-by-school/>



Current Educational Software programs

<http://www.nbcusd.org/district/instructional-technology/software-available-at-your-school/>

Schoology

HMH Math



Schoology

Learning management system

<https://www.schoology.com/>

District is currently using this program at the Middle School. It allows for assessment management, collaboration and personalized learning.



HMH Math

Houghton Mifflin Harcourt Go Math Series

<https://www.hmhco.com/programs/go-math>

Math program adopted by 5-12 online portal. Helps teacher differentiate instruction and build on math skills.

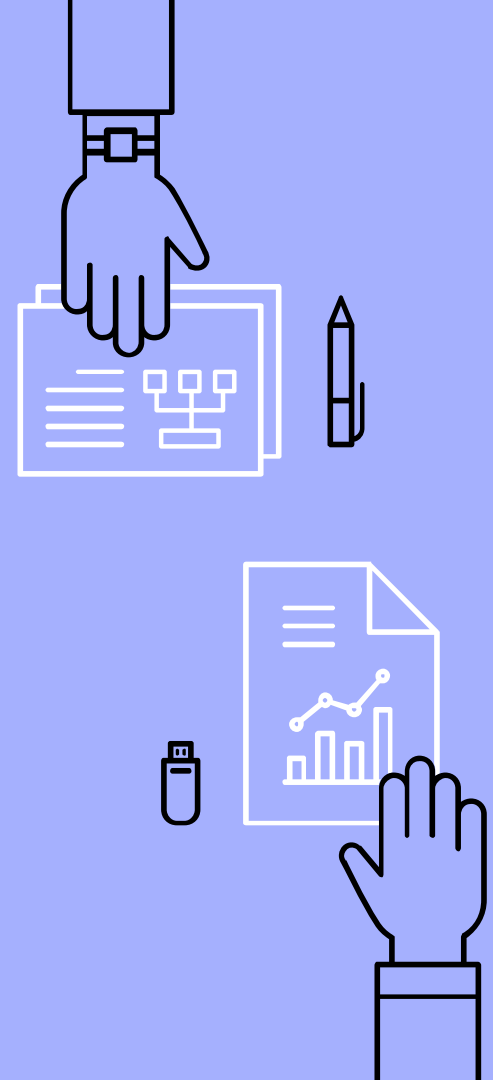


Career Cruising

Career Development Software

<https://public.careercruising.com/en/>

Software that allows students to align their course planning with their career and college pathways.



Teacher Survey

- ▶ 98 Teachers Responded
- ▶ 47% currently use them everyday
- ▶ 25% use computers at least weekly
- ▶ Primary use is for research, peer collaboration, testing, multimedia projects and reviewing instructional content



Current Portable Device Status

High School: 2:1 (~270 devices) and 2 computer labs

MS: 1:1 (~250 devices) and 1 computer lab

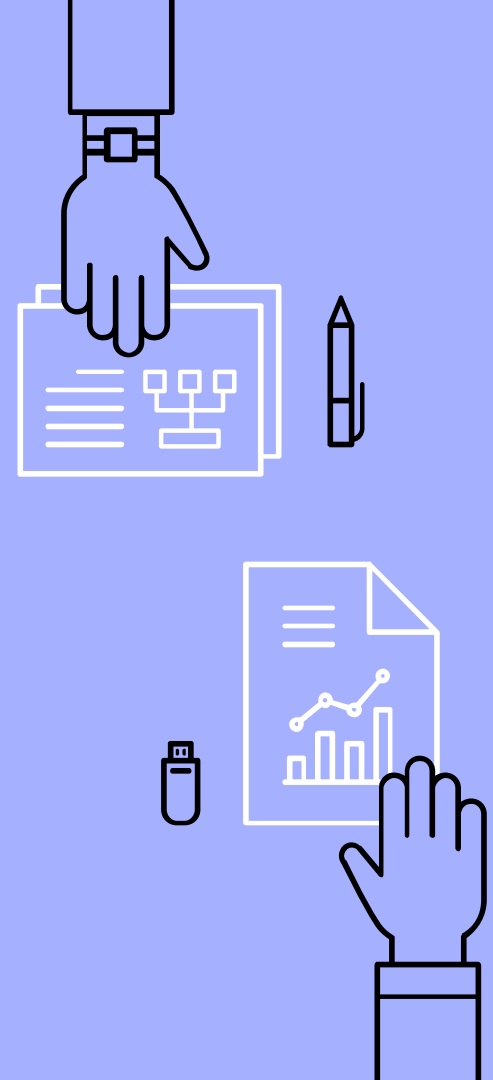
UE: 2.5:1 (~150 devices) and 1 computer lab

Capron: 2:1 (~75 devices) and 1 computer lab

Manchester: 2.2:1 (~75 devices) and 1 computer lab

Poplar Grove: 5:1 (~90 devices) and 1 computer lab

**Older devices are in many rooms for work spaces.



Planning for the Future

*Be at least 2:1 in all of our elementary schools

*Be at least 1:1 5th-12th grade

*Professional Development would need to be planned for every year (Beginner, Refresh and Advanced Training)

Growing student devices



Devices Needed to Achieve 4 Year Goal

High School - 550 total (+280)

Middle School - 0

UE - 275 total (+125)

Capron - 90 (+15)

Manchester - 90 (+15)

Poplar Grove - 150 (+60)

*Does not include older classroom
station devices



Phasing in Devices

- ▶ Year 1-4: Approximately 400 New Devices distributed across the district for Approximately \$100,000
- ▶ Total of 500 new devices needed to reach goal.
- ▶ Includes new devices as well as refreshing older devices
- ▶ *PD will be budgeted each year.



