

ATTACHMENT NO. IX-A: Review of Transportation Serious Safety Hazards

Potential motion: Move to approve the Transportation Safety Hazards for Poplar Grove Elementary.

Recommended action: Approve the motion.

The Transportation Safety Hazards for Poplar Grove Elementary have been reviewed and revised. Once approved these hazards will be sent to the Illinois Department of Transportation for review and final approval.

Poplar Grove Elementary:

Poplar Grove Road-Whiting-Ray Street (200-21-07) *Board approved on April 20, 2021*

Poplar Grove Rd IL 173 to .2 N of Il 173 and at crossing Il 173 (200-19-01-2019)
East on Route 173 from Carson Drive to Lane County Market (200-19-02-2019)
West on IL Route 173 from Summit to Hill St (200-21-06) New for 2021-2022

The Transportation Safety Hazards below were approved by the Board of Education on April 20, 2021.

Manchester Elementary:

The proposed hazards below will take the place of the current hazards and will cover the same area.

From the school along Grade School Road South (200-21-05)
From the school along Blaine Road (200-21-04)
From the school along Grade School Road North (200-21-03)

Capron Elementary:

The proposed hazards below will take the place of the current hazards and will cover the same area.

From the school to the village limit on N Wooster Rd (100-2021-02)
Crossing at Wooster and IL 173 (New for approval (200-21-1)



A publication entitled "School Safety Busing and Instructions for Submitting Findings" is available from the Illinois Department of Transportation, 2300 South Dirksen Parkway, Springfield, Illinois 62764. The school administrator preparing this submittal should refer to the instructions in the booklet.

Two copies of this form are to be submitted to the IDOT District Office indicated in the instruction booklet. The IDOT District Office will approve or disapprove the submittal within thirty (30) days and return one copy to the school district indicating the action taken.

Name of School District: North Boone School District
Address of Administrative Office: 6248 North Boone School Road
District #: 200, County: Boone, City: Poplar Grove, Zip Code: 61065
Name of Contact Representative: Melissa Geyman, Title: Business Manager, Phone Number: (815) 765-9437
Name of School to Which Children Are Walking: Poplar Grove Elementary, Annual Sequential Number: 200-21-06

Type of Condition: 1. [X] Single Hazard Type II, 2. [] Combination Hazard
Location: 3. Along (Street or Road Name) West on II Route 173
Attach a map showing the described location(s): 4. Type I From _____ To _____, 5. Type II From Summit To Hill St, 6. Type III At _____, 7. Type IV At _____

Type I - Walking Along a Roadway

Points: 8. Highest qualifying grade level (through _____ grade) Points Table 1, 9. Location of walkway walkway (on shoulder _____ feet from roadway) OR (behind curb or ditch _____ feet from roadway) Points Table 2, 10. Speed of traffic (_____ mph) Points Table 3, 11. Volume of traffic (_____ vehicles/hour) (_____ lanes) Points Table 4, 12. Length of hazardous section (_____ miles) Points Table 5, 13. Board's judgment points (attach explanation) Points, 14. Total of lines 8 through 13 Points

Type II - Walking on a Roadway

15. Highest qualifying grade level (through 4 _____ grade) 5 Points Table 6, 16. Reason for walking on roadway: (No shoulder or walkway off pavement for 1320 feet, OR Narrow bridge or underpass for _____ feet) 3 Points Table 7, 17. Speed of traffic (55 mph) 4 Points Table 8, 18. Volume of traffic (500 vehicles/hour) (2 lanes) 2 Points Table 9, 19. Length of hazardous section (.25 miles) 2 Points Table 10, 20. Board's judgment points (attach explanation) Points, 21. Total of lines 15 through 20 16 Points

Points (Continued)	Type III – Crossing a Roadway (Name of roadway being crossed _____)		
	22. Highest qualifying grade level (through _____ grade)	_____	Points Table 11
	23. Control on roadway being crossed (_____)	_____	Points Table 12
	24. Speed and volume of traffic (_____ mph) (_____ vehicles/hour)	_____	Points Table 13
	25. Width of roadway (_____ feet)	_____	Points Table 14
	26. Board's judgment points (attach explanation)	_____	Points
	27. Total of lines 22 through 26	_____	Points

Type IV – Crossing Railroad Tracks

28. Highest qualifying grade level (through _____ grade)	_____	Points Table 15
29. Crossing protection and number of tracks: (_____ protection; _____ tracks used)	_____	Points Table 16
30. Speed and number of trains: (_____ mph; _____ trains)	_____	Points Table 17
31. Board's judgment points (attach explanation)	_____	Points
32. Total of lines 28 through 31	_____	Points

- Finding**
33. Single hazard qualifies since 16 points in a Type II situation equals or exceeds 12.
34. Combination hazard qualifies since the total of _____ points in a Type _____ situation and _____ points in a Type _____ situation equals or exceeds 20.
35. Hazard is temporary for _____ school year (resubmit annually).
36. No hazard

Certification I hereby certify that the date in this application, including accompanying maps and statements, are true and correct to the best of my knowledge and belief.

Board approval was given on _____, and the minutes of this meeting bear evidence of this approval.

_____ Date

_____ Date

Signature of Secretary or President of Board of Education
or Board of Directors

Action by Illinois Department of Transportation

Date Submittal Received _____, 20 _____ Serial No. _____

- Approved
- Disapproved for corrections, additions, or clarifications noted in transmittal letter.
- Disapproved for reason or reasons noted in transmittal letter.

_____ Date

Signature of IDOT Regional Engineer

Reimbursement Estimate (This information will have no effect on IDOT's action on the submittal.)

1. Approximately how many students will annually be qualified for busing by this submittal that did not previously qualify for reimbursable busing? _____ students
2. What is the projected additional annual reimbursement that will result from this submittal? \$ _____



200-21-04



A publication entitled "School Safety Busing and Instructions for Submitting Findings" is available from the Illinois Department of Transportation, 2300 South Dirksen Parkway, Springfield, Illinois 62764. The school administrator preparing this submittal should refer to the instructions in the booklet.

Two copies of this form are to be submitted to the IDOT District Office indicated in the instruction booklet. The IDOT District Office will approve or disapprove the submittal within thirty (30) days and return one copy to the school district indicating the action taken.

Name of School District North Boone School District				Address of Administrative Office 100 Ray Street	
District # 200	County Boone	City Poplar Grove	Zip Code 61065		
Name of Contact Representative Melissa Geyman		Title Business Manager		Phone Number (815) 765-9437	
Name of School to Which Children Are Walking Poplar Grove Elementary			Annual Sequential Number (Use on Map and Attachments) 200-191		

Type of Condition	1. <input type="checkbox"/> Single Hazard	Type	_____
	2. <input checked="" type="checkbox"/> Combination Hazard	Type	II and Type III
Location Attach a map showing the described location(s).	3. Along (Street or Road Name)	Poplar Grove Rd	
	4. Type I From	_____	To _____
	5. Type II From	II Route 173	To .2 mi North of II Route 173
	6. Type III At	II Route 173	
	7. Type IV At	_____	

Type I – Walking Along a Roadway

Points Complete only for types listed on lines 1 or 2.	8. Highest qualifying grade level (through _____ grade)	_____	Points Table 1
	9. Location of walkway walkway (on shoulder _____ feet from roadway) OR (behind curb or ditch _____ feet from roadway)	_____	Points Table 2
	10. Speed of traffic (_____ mph)	_____	Points Table 3
	11. Volume of traffic (_____ vehicles/hour) (_____ lanes)	_____	Points Table 4
	12. Length of hazardous section (_____ miles)	_____	Points Table 5
	13. Board's judgment points (attach explanation)	_____	Points
	14. Total of lines 8 through 13	_____	Points

Type II – Walking on a Roadway

15. Highest qualifying grade level (through <u>4</u> grade)	<u>5</u>	Points Table 6
16. Reason for walking on roadway: (No shoulder or walkway off pavement for <u>1060</u> feet, OR Narrow bridge or underpass for _____ feet)	<u>3</u>	Points Table 7
17. Speed of traffic (<u>55</u> mph)	<u>4</u>	Points Table 8
18. Volume of traffic (<u>180</u> vehicles/hour) (<u>2</u> lanes)	<u>1</u>	Points Table 9
19. Length of hazardous section (<u>.2</u> miles)	<u>1</u>	Points Table 10
20. Board's judgment points (attach explanation)	_____	Points
21. Total of lines 15 through 20	<u>14</u>	Points

Points
(Continued)

Type III - Crossing a Roadway (Name of roadway being crossed <u>II Route 173</u>)			
22. Highest qualifying grade level (through <u>4</u> grade)		<u>5</u>	Points Table 11
23. Control on roadway being crossed (<u>4-way Stop</u>)		<u>.5</u>	Points Table 12
24. Speed and volume of traffic (<u>45</u> mph) (<u>500</u> vehicles/hour)		<u>3</u>	Points Table 13
25. Width of roadway (<u>60</u> feet)		<u>2</u>	Points Table 14
26. Board's judgment points (attach explanation)			Points
27. Total of lines 22 through 26		<u>10.5</u>	Points

Type IV - Crossing Railroad Tracks

28. Highest qualifying grade level (through _____ grade)			Points Table 15
29. Crossing protection and number of tracks: (_____ protection; _____ tracks used)			Points Table 16
30. Speed and number of trains: (_____ mph; _____ trains)			Points Table 17
31. Board's judgment points (attach explanation)			Points
32. Total of lines 28 through 31			Points

Finding

33. Single hazard qualifies since _____ points in a Type _____ situation equals or exceeds 12.
34. Combination hazard qualifies since the total of 14 points in a Type II situation and 10.5 points in a Type III situation equals or exceeds 20.
35. Hazard is temporary for _____ school year (resubmit annually).
36. No hazard

Certification

I hereby certify that the date in this application, including accompanying maps and statements, are true and correct to the best of my knowledge and belief.
 Board approval was given on 8/20/19, and the minutes of this meeting bear evidence of this approval.
 Date

9/9/19
Date

Mary Maxey
Signature of Secretary or President of Board of Education or Board of Directors

Action by Illinois Department of Transportation

Date Submittal Received Sept 16, 20 19

Serial No. 2-19-766

- Approved
- Disapproved for corrections, additions, or clarifications noted in transmittal letter.
- Disapproved for reason or reasons noted in transmittal letter.

9-20-2019
Date

[Signature]
Signature of IDOT Regional Engineer

Reimbursement Estimate (This information will have no effect on IDOT's action on the submittal.)

1. Approximately how many students will annually be qualified for busing by this submittal that did not previously qualify for reimbursable busing? _____ students
2. What is the projected additional annual reimbursement that will result from this submittal? \$ _____

502 Poplar Grove Road

32

200-18-01

4 min
0.2 mile

32

The Grove

238 North State Street

W Grove St

171

Poplar Grove United Methodist Church

Park

Summit St

N State St

Carson Dr

Summit St

Poplar Grove Elementary School



A publication entitled "School Safety Busing and Instructions for Submitting Findings" is available from the Illinois Department of Transportation, 2300 South Dirksen Parkway, Springfield, Illinois 62764. The school administrator preparing this submittal should refer to the instructions in the booklet.

Two copies of this form are to be submitted to the IDOT District Office indicated in the instruction booklet. The IDOT District Office will approve or disapprove the submittal within thirty (30) days and return one copy to the school district indicating the action taken.

Name of School District: North Boone School District; Address of Administrative Office: 100 Ray Street; District #: 200; County: Boone; City: Poplar Grove; Zip Code: 61065; Name of Contact Representative: Melissa Geyman; Title: Business Manager; Phone Number: (815) 765-9437; Name of School to Which Children Are Walking: Poplar Grove Elementary; Annual Sequential Number: 200-16.2

Type of Condition: 1. [X] Single Hazard Type II; 2. [] Combination Hazard; Location: 3. Along (Street or Road Name) East on II Route 173; 4. Type I From To; 5. Type II From Carson Drive To Lane Country Market; 6. Type III At; 7. Type IV At

Type I - Walking Along a Roadway

Points: 8. Highest qualifying grade level (through grade) Points Table 1; 9. Location of walkway walkway (on shoulder feet from roadway) OR (behind curb or ditch feet from roadway) Points Table 2; 10. Speed of traffic (mph) Points Table 3; 11. Volume of traffic (vehicles/hour) (lanes) Points Table 4; 12. Length of hazardous section (miles) Points Table 5; 13. Board's judgment points (attach explanation) Points; 14. Total of lines 8 through 13 Points

Type II - Walking on a Roadway

Points: 15. Highest qualifying grade level (through 4 grade) 5 Points Table 6; 16. Reason for walking on roadway: (No shoulder or walkway off pavement for 1320 feet, OR Narrow bridge or underpass for feet) 3 Points Table 7; 17. Speed of traffic (55 mph) 4 Points Table 8; 18. Volume of traffic (500 vehicles/hour) (2 lanes) 2 Points Table 9; 19. Length of hazardous section (.25 miles) 2 Points Table 10; 20. Board's judgment points (attach explanation) Points; 21. Total of lines 15 through 20 16 Points

Points
(Continued)

- Type III - Crossing a Roadway** (Name of roadway being crossed _____)
- 22. Highest qualifying grade level (through _____ grade) _____ Points
Table 11
 - 23. Control on roadway being crossed (_____) _____ Points
Table 12
 - 24. Speed and volume of traffic (_____ mph) (_____ vehicles/hour) _____ Points
Table 13
 - 25. Width of roadway (_____ feet) _____ Points
Table 14
 - 26. Board's judgment points (attach explanation) _____ Points
 - 27. Total of lines 22 through 26 _____ Points

Type IV - Crossing Railroad Tracks

- 28. Highest qualifying grade level (through _____ grade) _____ Points
Table 15
- 29. Crossing protection and number of tracks: (_____ protection; _____ tracks used) _____ Points
Table 16
- 30. Speed and number of trains: (_____ mph; _____ trains) _____ Points
Table 17
- 31. Board's judgment points (attach explanation) _____ Points
- 32. Total of lines 28 through 31 _____ Points

Finding

- 33. Single hazard qualifies since 16 points in a Type II situation equals or exceeds 12.
- 34. Combination hazard qualifies since the total of _____ points in a Type _____ situation and _____ points in a Type _____ situation equals or exceeds 20.
- 35. Hazard is temporary for _____ school year (resubmit annually).
- 36. No hazard

Certification

I hereby certify that the date in this application, including accompanying maps and statements, are true and correct to the best of my knowledge and belief.
 Board approval was given on 8/20/19, and the minutes of this meeting bear evidence of this approval. Date

9/9/19
Date

Mary Mapey
Signature of Secretary or President of Board of Education or Board of Directors

Action by Illinois Department of Transportation

Date Submittal Received Sept 16, 20 19

Serial No. 2-19-767

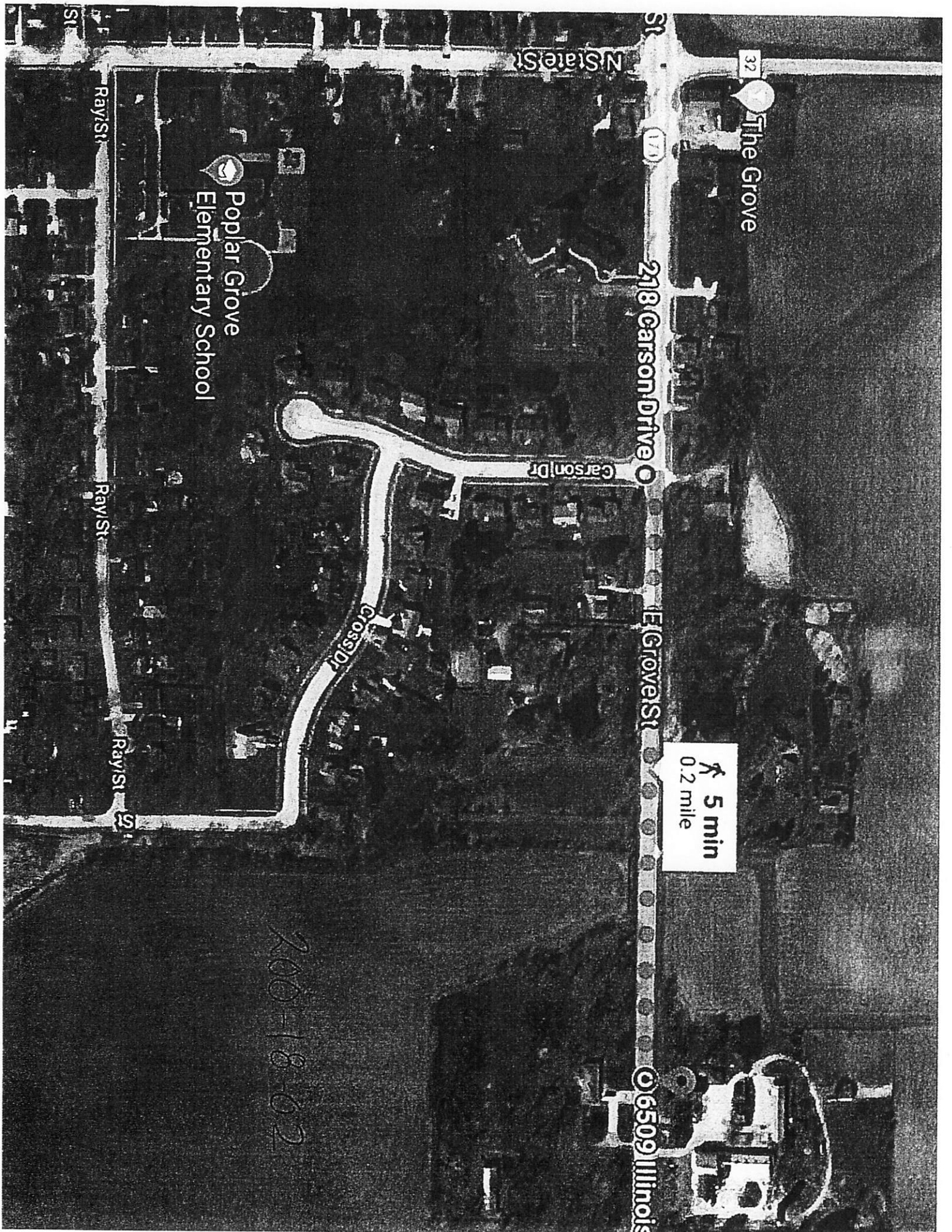
- Approved
- Disapproved for corrections, additions, or clarifications noted in transmittal letter.
- Disapproved for reason or reasons noted in transmittal letter.

9-20-19
Date

[Signature]
Signature of IDOT Regional Engineer

Reimbursement Estimate (This information will have no effect on IDOT's action on the submittal.)

- 1. Approximately how many students will annually be qualified for busing by this submittal that did not previously qualify for reimbursable busing? _____ students
- 2. What is the projected additional annual reimbursement that will result from this submittal? \$ _____



32

The Grove

170

218 Carson Drive

N State St

Carson Dr

E Grove St

5 min
0.2 mile

Poplar Grove
Elementary School

Ray St

Ray St

Ray St

Ray St

06509 Illinois

200-18-02