



Constellation Energy®

The New IEC Natural Gas Program

for

**North Boone County CUSD
#200**

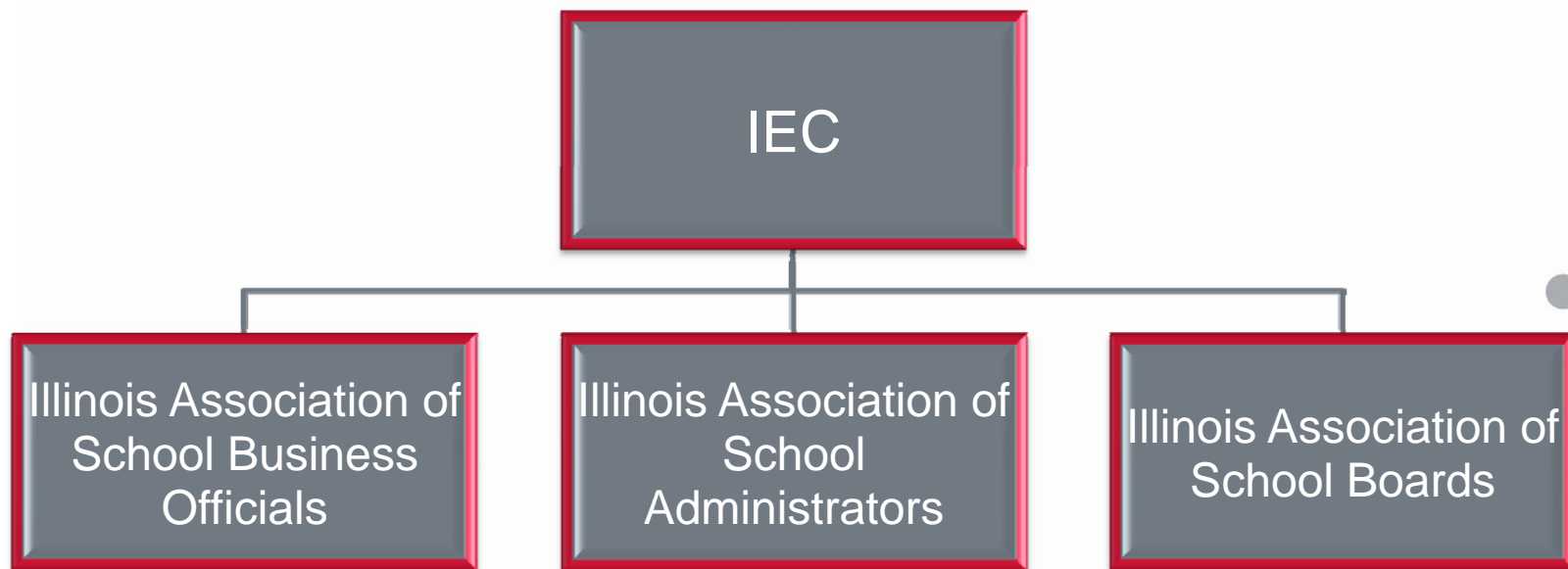
Illinois Energy Consortium (IEC) Overview

- The Illinois Energy Consortium (IEC) was formed in 1999 as an Illinois *not-for-profit corporation and is a state-wide energy purchasing consortium.*
- The IEC is a joint program sponsored by the Illinois Association of School Boards (IASB), Illinois Association of School Administrators (IASA), and Illinois Association of School Business Officials (IASBO).
- The combined membership of IASB, IASA, and IASBO includes about 900 public school districts.
- The IEC board has nine Directors with three directors from each of these associations.



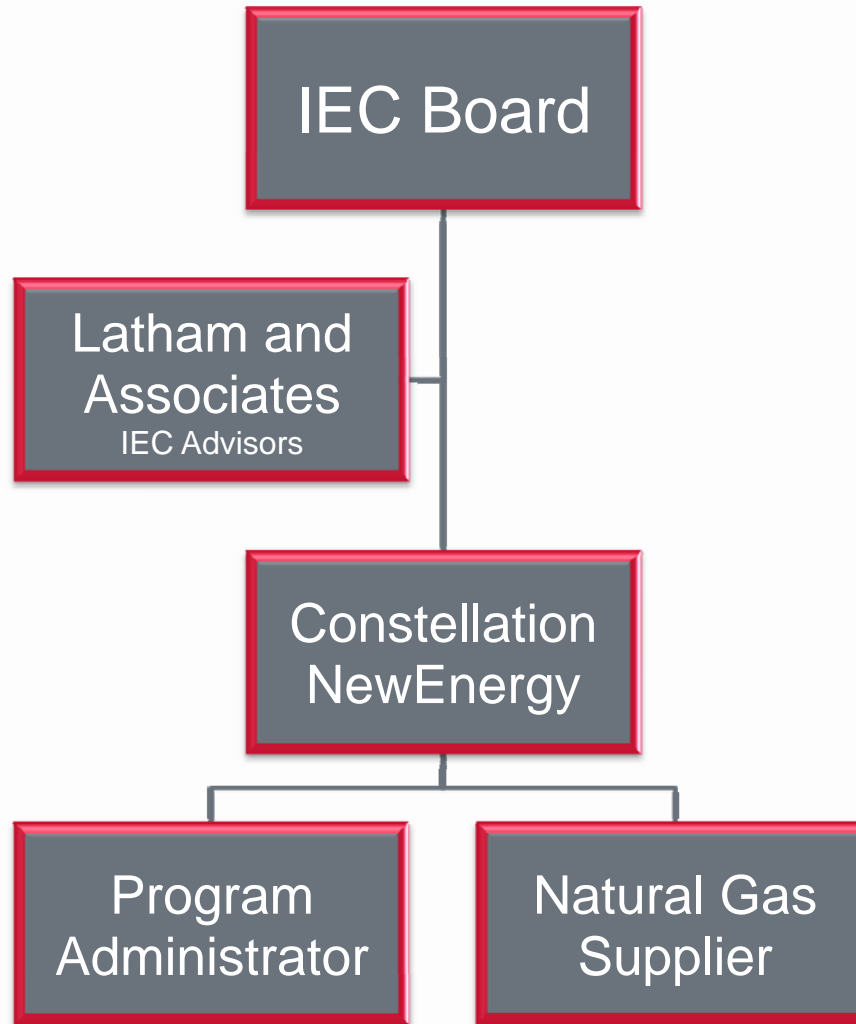
Constellation Energy

IEC Board – 9 Board Members, 3 from each Association



Constellation Energy®

IEC Natural Gas Program Management



IEC Natural Gas Program - At A Glance

1. **300** Members with over **1,300** utility account numbers with **42** million therms (4.2 bcf) of annual usage
2. **115** Members joined the program in last 18-months.
3. Open to all public schools district, private schools, junior colleges, colleges, universities, and intergovernmental agencies in Illinois.
4. Our Natural Gas Program Administrator and Supplier (*NewEnergy Gas*) has 15+ years experience serving Illinois based accounts
5. Open to perspective members behind the following utilities:
 - Ameren (IP, Cilco, CIPS)
 - MidAmerican
 - Nicor Gas
 - North Shore Gas
 - Peoples Gas



Constellation Energy®

IEC Natural Gas Program Goal & Purpose

- The IEC team will help you control natural gas costs & aid in achieving your energy budget goals.
- A great side benefit for our members is that our programs have outperformed the utility's energy costs in the past but that is not the purpose of our programs.
- Our main purpose is to help our members with energy budget accuracy and help them avoid the volatile energy price spikes that the U.S. energy market has endured over the past ten years.



Constellation Energy

Member Focused Model

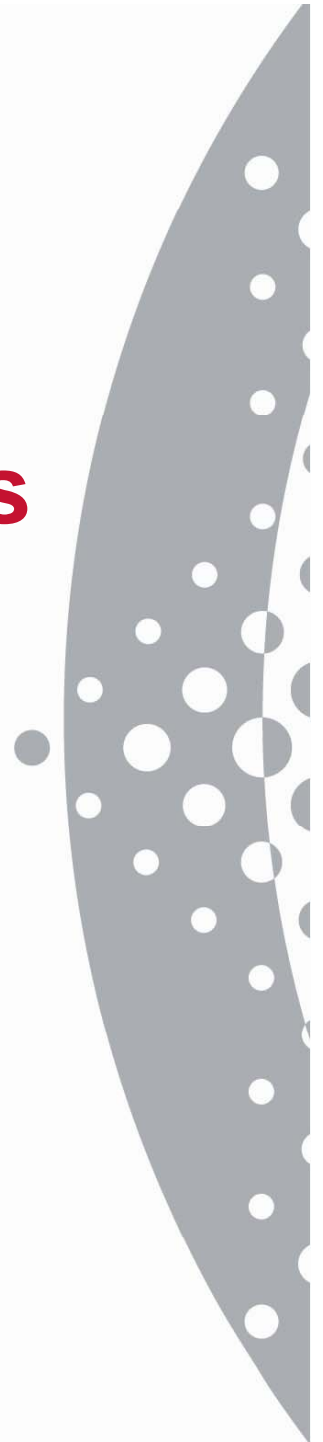
The IEC shall function as your full-service natural gas provider – ***an extension of your staff***

- **Unparalleled Service, Information, & Education**
 - Dedicated Account Manager
 - Web-based customer information system (EnerPro[®])
 - Annual Energy Conferences and Regional Workshops



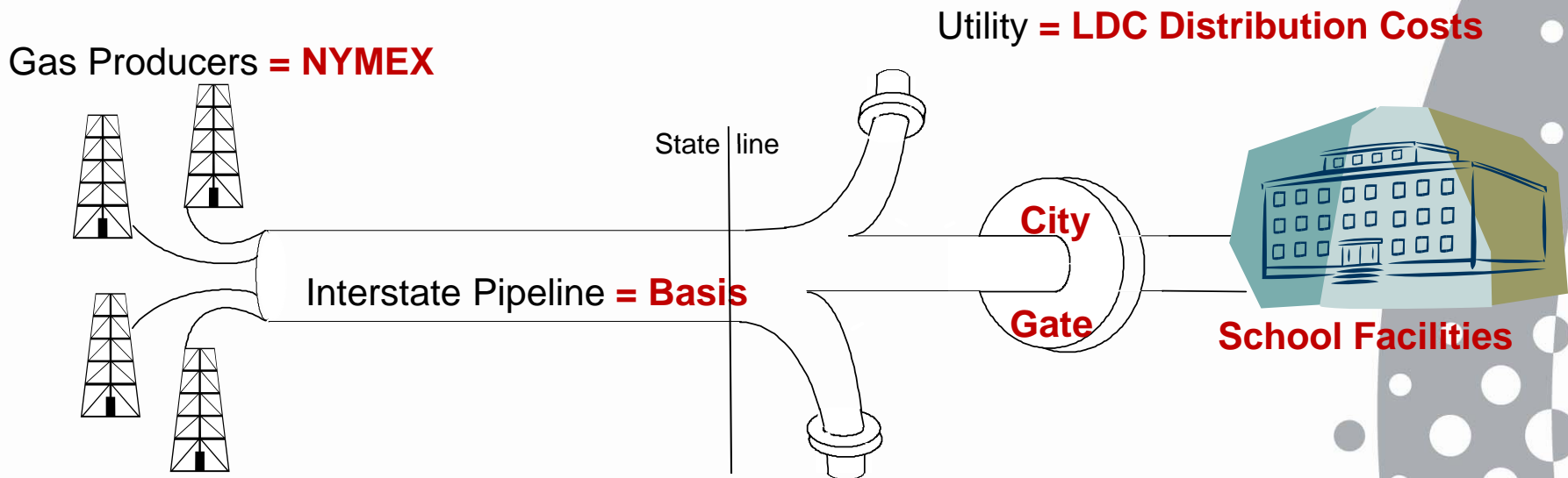
Constellation Energy

Natural Gas Cost Components and Energy Market Volatility



Constellation Energy

Gas 101 - Natural Gas Delivery System



Natural gas exploration & production companies

Interstate gas pipelines moving gas to utilities

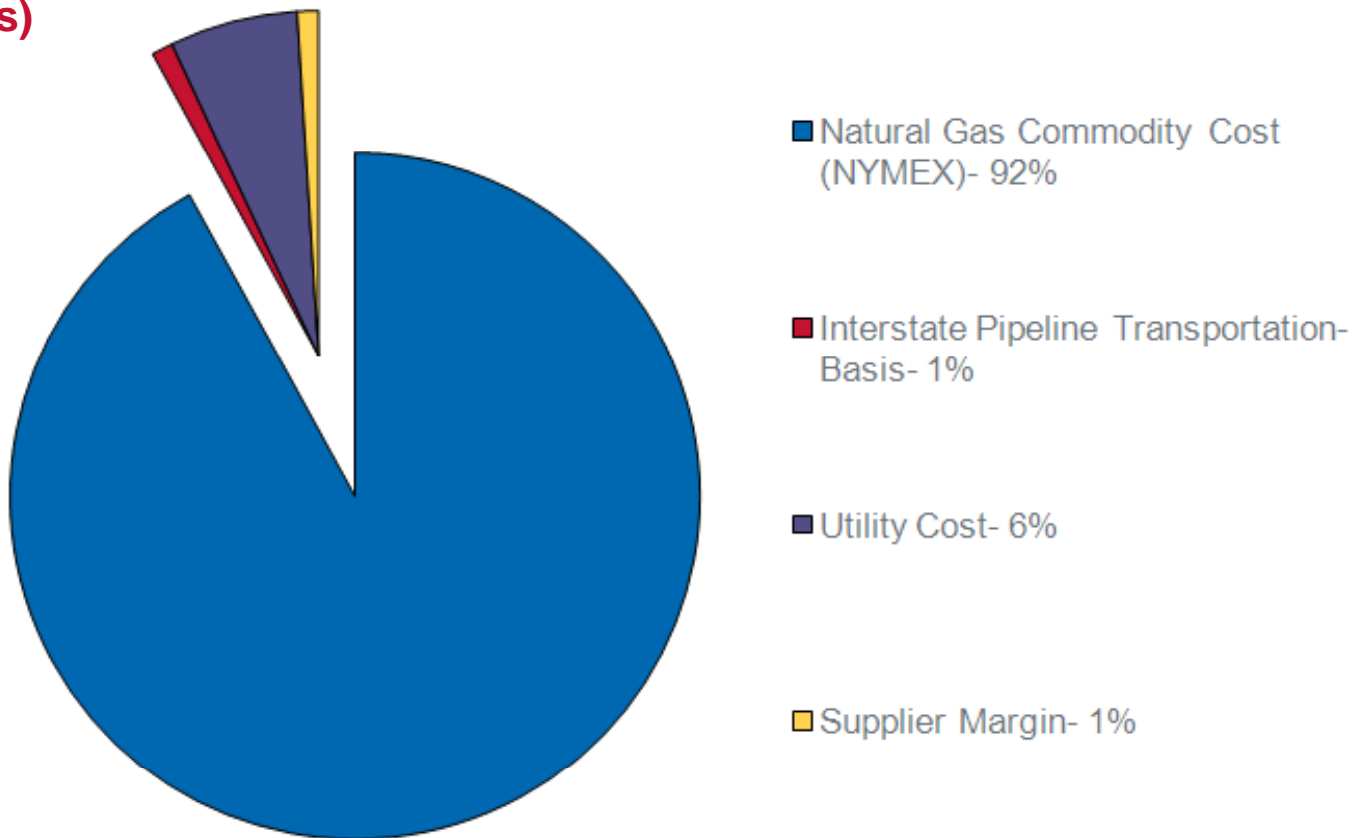
Local gas utilities delivering gas to end-users

Burning gas for heat and process applications



Natural Gas Cost Components

(Nicor Gas)

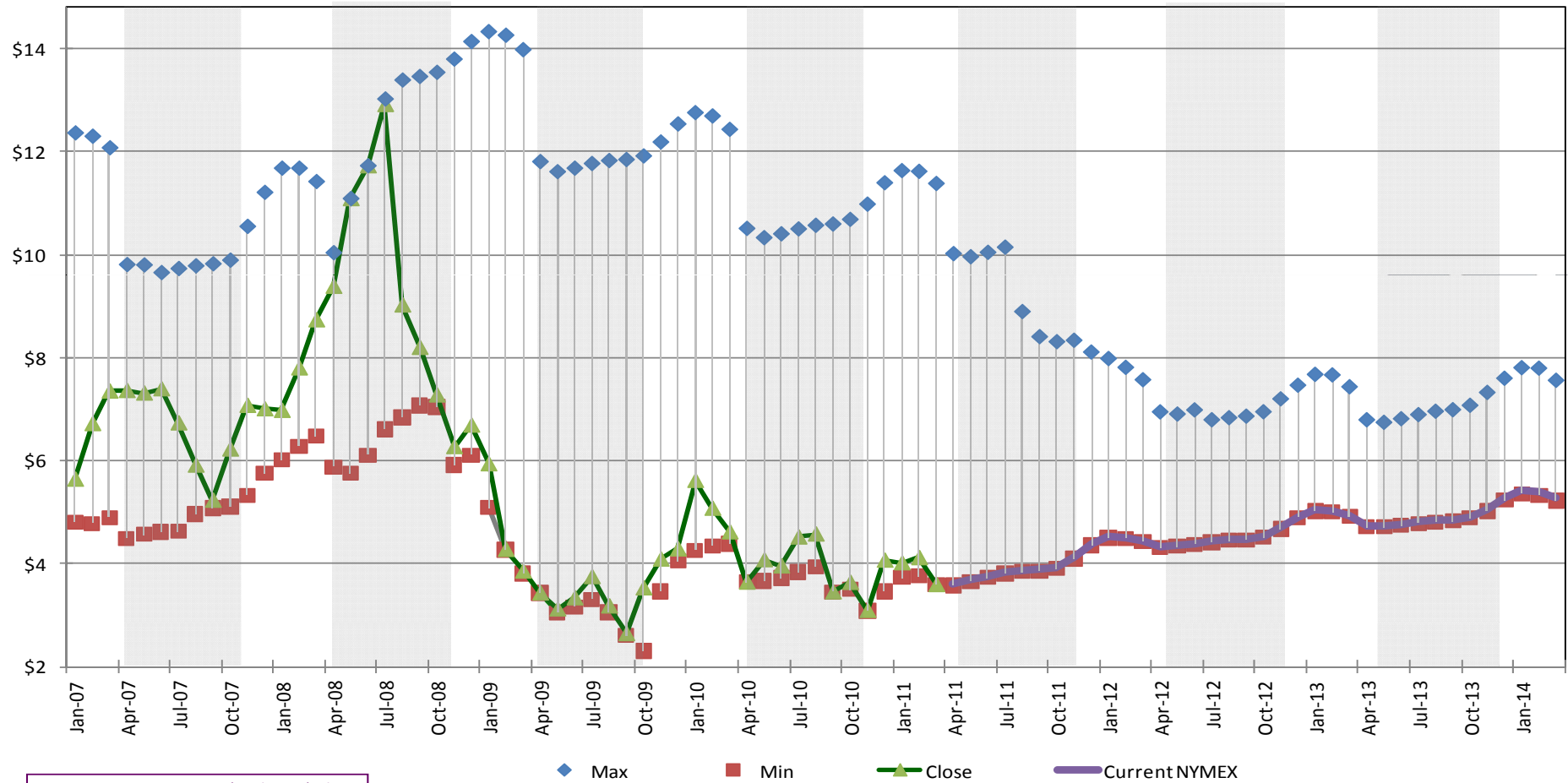


The NYMEX Commodity Cost is your largest expense.
We have the tools to help you manage NYMEX price volatility.



NYMEX Futures – Historical Settles and Forward Analysis

**NYMEX Daily Settlement Trading Range
3 Years Prior to Settle**



Current Market: 3/4/2011



Natural Gas Load Profile Analysis

North Boone CUSD #200 Natural Gas Load Profile Analysis Summary

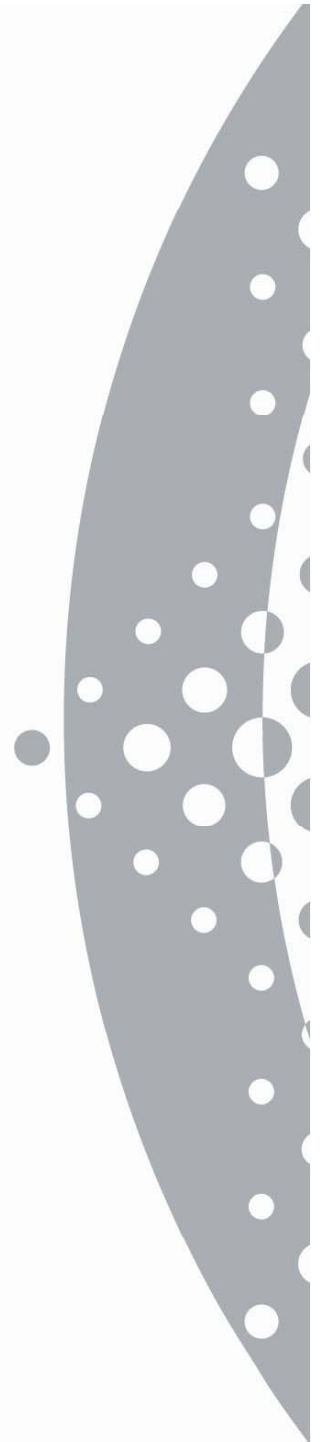
Summary Load Profile (based on 2 Yr. Avg. of each account)

Account #	2742832000	7689333323	4385732000	8975732000	1156991000	6391601670	<u>TOTALS</u>
Rate	94	74	94	94	94	4	
MDCQ	244	762	461	390	519	-	2,376
Storage Capacity	7,564	23,622	14,291	12,090	16,089	-	73,656
Facility Name	Capron Elementray	North Boone H.S.	North Boone Middle	Poplar Grove School	North Boone Upper Elementary	Administration Building	
Meter Address	200 N Wooster St Poplar Grove, IL	17823 Poplar Grove Rd Poplar Grove, IL	17641 Poplar Grove Rd Poplar Grove, IL	208 N State St Poplar Grove, IL	6200 N Boone School Rd Poplar Grove, IL	6248 N Boone School Rd Poplar Grove, IL	
Month	(therms)	(therms)	(therms)	(therms)	(therms)	(therms)	<u>2-Yr Avg.</u>
January	5,119	15,672	8,453	7,726	9,008	1,097	47,074
February	3,791	12,686	6,119	5,905	5,861	891	35,252
March	3,010	9,164	4,713	4,296	4,348	458	25,989
April	1,675	6,140	3,393	2,265	2,533	60	16,065
May	340	4,773	1,204	813	1,223	62	8,414
June	10	1,079	150	110	422	69	1,839
July	7	255	130	47	306	11	755
August	8	425	85	79	303	21	919
September	102	2,314	444	443	743	85	4,129
October	1,856	5,192	3,629	2,155	2,252	278	15,361
November	2,942	8,827	4,770	4,131	3,811	583	25,064
December	4,759	13,969	8,069	7,147	7,677	939	42,559
	23,616	80,492	41,156	35,115	38,484	4,553	223,415

Winter Usage	175,936	79%
Summer Usage	47,480	21%



The New IEC Natural Gas Program Details



Constellation Energy®

Why district's have joined the IEC Natural Gas Program:

- The Power of “**POOLING**”
- **Account Management** – Dedicated resources to serve your needs
- **Choices** – You choose the program that best fits your needs and requirements
- **Payment Terms** – 45-day payment terms with an optional early pay discount program
- **EnerPro[®]** – Web-based customer reporting system



Constellation Energy

The Power of “Pooling”

- Receive the benefits of combining your natural gas needs with all the other IEC members behind your utility
- Pool members can benefit directly by **increased purchasing leverage and efficiency**
- **Critical Day protection** with “super-pooling”



Constellation Energy®

Account Management

You will have your own dedicated account manager

Liz Peronto:

- assigned to your accounts
- available by a toll-free number (888-579-6600)
- responsible for managing your accounts
- monitoring the program option you implement
- available for all questions
- for special reporting requests

The IEC is an extension of your staff



Constellation Energy

IEC Natural Gas Program Options

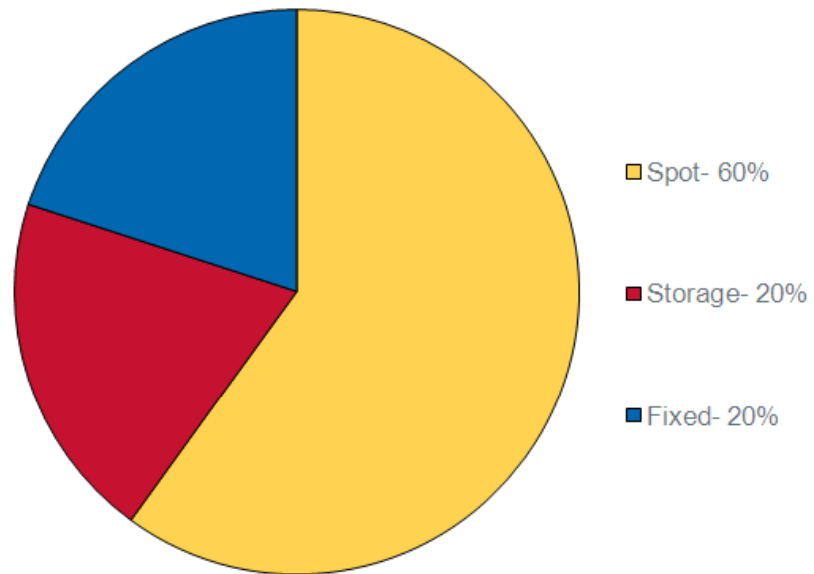
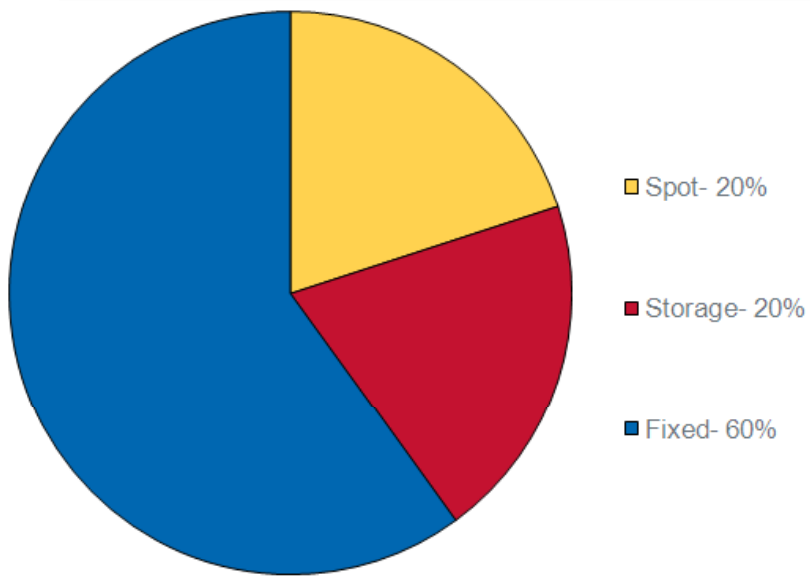
The new IEC natural gas program has three options:

- A. The “**Managed Program**”, a hands-off minimal involvement program.
- B. The “**Customized Portfolio**” a hands-on you make the decisions program
- C. The “**Spot Pool Program**” where all your needs float with the IEC Spot Pool Price



Constellation Energy

Choose a program option based on your price risk tolerance (Nicor Gas)



Low ← Risk Tolerance → High



Constellation Energy

Program Choice should be based on ***your specific purchasing strategy and goals***

BUDGET ACCURACY

Knowing in advance how much you will pay for a defined volume in a future month.

SPIKE AVOIDANCE

Knowing in advance that your exposure to high-end volatility (price spikes) will be limited.

BEATING THE UTILITY

Paying a lower price than the prevailing utility natural gas cost.



Constellation Energy

The IEC “Managed Program”

(Only for accounts behind Nicor Gas)

1. IEC Advisors, Board, and Constellation NewEnergy develop and execute a diversified portfolio to mitigate natural gas price risk
2. Fully automated program - *Minimal input required*
3. Storage Release “Shared Savings” Program for all members.

Turn-key solution – just select the option and your involvement is done!



Constellation Energy

The IEC "Managed Program" – Budget Forecast



North Boone County CUSD 200

OPTION A "IEC MANAGED PROGRAM" with Storage Release Shared Savings Program



BUDGET FORECAST for July 2011 through June 2012

	NICOR												Last Updated:	3/7/2011
	Jul-11	Aug-11	Sep-11	Oct-11	Nov-11	Dec-11	Jan-12	Feb-12	Mar-12	Apr-12	May-12	Jun-12	Total	
Net Usage	755	919	4,129	15,361	25,064	42,559	47,074	35,252	25,989	16,065	8,414	1,839	223,415	
	Estimated	Estimated	Estimated	Estimated	Estimated	Estimated	Estimated	Estimated	Estimated	Estimated	Estimated	Estimated		
Gross Delivered Therms:	772	940	4,227	15,726	25,659	43,569	48,192	36,089	26,606	16,446	8,613	1,883	228,721	
<i>Net Delivered Therms (less utility loss factor)</i>	756	920	4,134	15,383	25,099	42,619	47,141	35,302	26,026	16,088	8,426	1,842	223,735	
Deliveries:														
IEC SPOT POOL GAS for usage	772	940	4,227	15,726	19,393	32,930	36,423	27,276	20,109	16,446	8,613	1,883	184,737	
Estimated NYMEX price per therm	\$0.3961	\$0.4000	\$0.4040	\$0.4058	\$0.4300	\$0.4540	\$0.4687	\$0.4700	\$0.4620	\$0.4529	\$0.4562	\$0.4597	\$0.4519	
IEC Option A Gas Hedged as of today	0	0	0	0	6,266	10,640	11,768	8,813	6,497	0	0	0	43,984	
WACOG NYMEX price per therm	\$0.0000	\$0.0000	\$0.0000	\$0.0000	\$0.5670	\$0.5670	\$0.5670	\$0.5670	\$0.5670	\$0.0000	\$0.0000	\$0.0000	\$0.5670	
Estimated Basis Volume	755	919	4,129	15,361	25,064	42,559	47,074	35,252	25,989	16,065	8,414	1,839	223,415	
Estimated Basis Volume Price per therm	\$ 0.0238	\$ 0.0238	\$ 0.0238	\$ 0.0258	\$ 0.0355	\$ 0.0355	\$ 0.0355	\$ 0.0355	\$ 0.0355	\$ 0.0217	\$ 0.0217	\$ 0.0217	\$0.0337	
Commodity & Utility Consumption Charge														
Commodity Charge *	\$324	\$399	\$1,808	\$6,787	\$12,238	\$21,827	\$24,851	\$18,657	\$13,542	\$7,805	\$4,116	\$906	\$113,261	
Wgt Avg Cost/ Therm	\$0.4299	\$0.4339	\$0.4380	\$0.4419	\$0.4883	\$0.5129	\$0.5279	\$0.5292	\$0.5211	\$0.4859	\$0.4893	\$0.4928	\$0.5070	
EST Utility Distribution Charges without taxes	\$ 484	\$ 491	\$ 632	\$ 1,027	\$ 1,366	\$ 1,981	\$ 2,219	\$ 1,785	\$ 1,461	\$ 1,077	\$ 796	\$ 534	\$13,851	
	\$0.6412	\$0.5346	\$0.1530	\$0.0668	\$0.0545	\$0.0465	\$0.0471	\$0.0506	\$0.0562	\$0.0670	\$0.0946	\$0.2903	\$0.0620	
IEC Per Account Member Fee	\$120	\$120	\$120	\$120	\$120	\$120	\$120	\$120	\$120	\$120	\$120	\$120	\$1,440	
6														
Est. "Shared Savings" Storage Discount	\$0	\$0	\$0	\$0	(\$242)	(\$412)	(\$455)	(\$341)	(\$251)	\$0	\$0	\$0	(\$1,702)	
TOTAL NATURAL GAS COSTS	\$933	\$1,015	\$2,584	\$8,026	\$13,632	\$23,771	\$27,017	\$20,433	\$15,027	\$9,099	\$5,083	\$1,571	\$128,191	
	\$1.2362	\$1.1051	\$0.6260	\$0.5225	\$0.5439	\$0.5586	\$0.5739	\$0.5796	\$0.5782	\$0.5664	\$0.6041	\$0.8544	\$0.5738	
Spot Market Price	\$ 0.3961	\$ 0.4000	\$ 0.4040	\$ 0.4058	\$ 0.4300	\$ 0.4540	\$ 0.4687	\$ 0.4700	\$ 0.4620	\$ 0.4529	\$ 0.4562	\$ 0.4597		
	Forecast	Forecast	Forecast	Forecast	Forecast	Forecast	Forecast	Forecast	Forecast	Forecast	Forecast	Forecast		

* IEC Consumption Charge includes NICOR utility loss factor.

Disclaimer: The preceding information is based upon market price estimates, estimated usage, and therefore, cannot be construed as a formal offer or as a guaranteed delivered price.



The “Customized Portfolio”

(Only for accounts behind Nicor Gas)

1. You help design the Portfolio, a more hands-on approach
2. You decide the volumes and you choose the hedging program method (traditional or M.V.P.)
3. You have the additional choice of the Managed Storage Program option in lieu of the Storage Release Program.

*Hands-on, you tell the IEC how much and when to buy!
Typically members that have an experienced energy buyer on staff select this option.*



The IEC “Spot Pool Price” Program –

Best Performing Program since 2008 Financial Bubble Broke!

1. All your gas needs are priced monthly on the IEC Spot Pool Price – *your gas price changes every month.*
2. Flexibility to switch to the other two IEC program options**
3. Storage Release “Shared Savings” Program for all members.

**one time per school year

First started as a program for members that have a mandate or resolution against “hedging” energy prices select this option.



IEC "Spot Pool Price" – Budget Forecast



North Boone County CUSD 200

"OPTION C" IEC Spot Pool Program with Storage Release Shared Savings Program

BUDGET FORECAST for July 2011 through June 2012



	NICOR												Last Updated:	3/7/2011
	Jul-11	Aug-11	Sep-11	Oct-11	Nov-11	Dec-11	Jan-12	Feb-12	Mar-12	Apr-12	May-12	Jun-12	Total	
	Estimated	Estimated	Estimated	Estimated	Estimated	Estimated	Estimated	Estimated	Estimated	Estimated	Estimated	Estimated		
Net Usage	755	919	4,129	15,361	25,064	42,559	47,074	35,252	25,989	16,065	8,414	1,839	223,415	
Gross Delivered Therms:	772	940	4,227	15,726	25,659	43,569	48,192	36,089	26,606	16,446	8,613	1,883	228,721	
<i>Net Delivered Therms (less utility loss factor)</i>	756	920	4,134	15,383	25,099	42,619	47,141	35,302	26,026	16,088	8,426	1,842	223,735	
Deliveries:														
IEC SPOT POOL GAS for usage	772	940	4,227	15,726	25,659	43,569	48,192	36,089	26,606	16,446	8,613	1,883	228,721	
Estimated NYMEX price per therm	\$0.3961	\$0.4000	\$0.4040	\$0.4058	\$0.4300	\$0.4540	\$0.4687	\$0.4700	\$0.4620	\$0.4529	\$0.4562	\$0.4597	\$0.4533	
Estimated Basis Volume	755	919	4,129	15,361	25,064	42,559	47,074	35,252	25,989	16,065	8,414	1,839	223,415	
Estimated Basis Volume Price per therm	\$ 0.0238	\$ 0.0238	\$ 0.0238	\$ 0.0258	\$ 0.0355	\$ 0.0355	\$ 0.0355	\$ 0.0355	\$ 0.0355	\$ 0.0217	\$ 0.0217	\$ 0.0217	\$0.0337	
Commodity & Utility Consumption Charge														
Commodity Charge *	\$324	\$399	\$1,808	\$6,787	\$11,944	\$21,327	\$24,298	\$18,243	\$13,236	\$7,805	\$4,116	\$906	\$111,195	
Wgt Avg Cost/ Therm	\$0.4299	\$0.4339	\$0.4380	\$0.4419	\$0.4766	\$0.5011	\$0.5162	\$0.5175	\$0.5093	\$0.4859	\$0.4893	\$0.4928	\$0.4977	
EST Utility Distribution Charges	\$ 484	\$ 491	\$ 632	\$ 1,027	\$ 1,366	\$ 1,981	\$ 2,219	\$ 1,785	\$ 1,461	\$ 1,077	\$ 796	\$ 534	\$13,851	
	\$0.6412	\$0.5346	\$0.1530	\$0.0668	\$0.0545	\$0.0465	\$0.0471	\$0.0506	\$0.0562	\$0.0670	\$0.0946	\$0.2903	\$0.0620	
IEC Per Account Member Fee	\$120	\$120	\$120	\$120	\$120	\$120	\$120	\$120	\$120	\$120	\$120	\$120	\$1,440	
6														
Est. "Shared Savings" Storage Discount	\$0	\$0	\$0	\$0	(\$334)	(\$566)	(\$626)	(\$469)	(\$346)	\$0	\$0	\$0	(\$2,341)	
TOTAL NATURAL GAS COSTS	\$933	\$1,015	\$2,584	\$8,026	\$13,247	\$23,117	\$26,293	\$19,890	\$14,627	\$9,099	\$5,083	\$1,571	\$125,485	
	\$1.2362	\$1.1051	\$0.6260	\$0.5225	\$0.5285	\$0.5432	\$0.5586	\$0.5642	\$0.5628	\$0.5664	\$0.6041	\$0.8544	\$0.5617	
<i>* IEC Consumption Charge includes NICOR utility loss factor.</i>														
Spot Market Price	\$ 0.3961	\$ 0.4000	\$ 0.4040	\$ 0.4058	\$ 0.4300	\$ 0.4540	\$ 0.4687	\$ 0.4700	\$ 0.4620	\$ 0.4529	\$ 0.4562	\$ 0.4597		
	Forecast	Forecast	Forecast	Forecast	Forecast	Forecast	Forecast	Forecast	Forecast	Forecast	Forecast	Forecast		

Disclaimer: The preceding information is based upon market price estimates, estimated usage, and therefore, cannot be construed as a formal offer or as a guaranteed delivered price.



Managed Storage Program Details

(For Nicor Gas “Hands-on” members)

The Managed Storage Program, is an actively managed, pay-as-delivered program that:

- Historically, provided natural gas cost avoidance opportunities averaging \$0.09 per therm
- Offers enhanced reliability and Critical Day protection
- Offers a flexible, cost efficient & key component of a diversified purchasing plan
- Smooths out Cash Flow by building an inventory of natural gas during the summer months and withdrawing gas during the winter months
- Has no incremental charges for using a Member’s storage capacity



Constellation Energy

Storage Release “Shared Savings” Program Details

(Only for accounts behind Nicor Gas)

- Pay-for-consumption based program managed without the Member investing in storage gas with the primary objective of achieving discounted winter pricing:
 - Open to all IEC members behind the Nicor Gas utility
 - Has IEC members opting for the IEC to actively manage their storage capacity throughout the year (versus picking one point-in-time to value storage)
 - Passes shared storage savings on to IEC members, through discounted winter pricing averaging \$0.013 per therm



Constellation Energy

Payment Terms:

- Net 45-Day Terms with an Optional Discount Program for Early Payment of **minus (-)\$.0015** per billed therm discount will be credited in the succeeding monthly invoice statement.
- We bill on or about the 10th of the month, if you can pay by the 25th of the month, you get the discount, if not you have the balance of the 45-day terms.

Payment Methods:

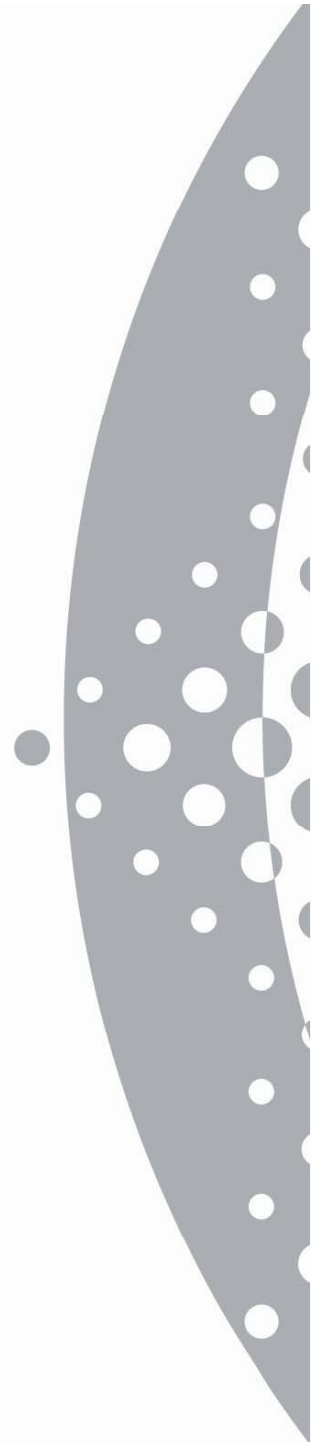
- Check
- ACH Payment
- Wire Transfer



Constellation Energy

EnerPro[®]

Web-based customer reporting tool



Constellation Energy

EnerPro[®] provides you with facility specific reports, such as:

Monthly invoices

Daily gas consumption reports

Historical gas consumption reports

Storage injection and withdrawal reports

Hedging and risk management program reports



Constellation Energy

EnerPro[®] – Welcome Screen

Constellation Energy **EnerPro**

Invoices & Reports | Newsstand | Your Contact Info | Your Account Manager | Links | Change Your Password | NewEnergy.com

Invoices & Reports

ABC Demo Company Plant 1

Gas Invoice

Aug 2008 View

Daily Usage

ABCD1-001 Aug 2008 View

Usage Overview

ABCD1-001 View

MVP

Current Composite View

PROPRIETARY AND CONFIDENTIAL | © Copyright Constellation NewEnergy - Gas Division 2008 All rights reserved.

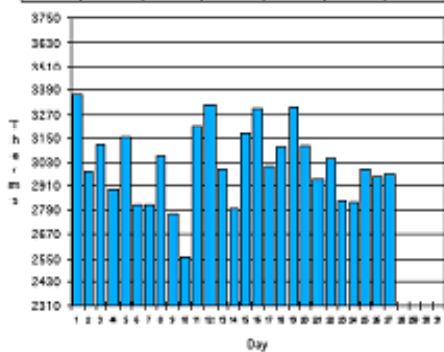


EnerPro® – Sample Daily and Historical Usage Data

Constellation
NewEnergy
Gas Division

ABC Company
Daily Usage in Therms *
May 2005

Sun	Mon	Tue	Wed	Thu	Fri	Sat
3,365	2,977	3,119	2,897	3,161	2,818	2,818
3,066	2,777	2,563	3,215	3,319	2,989	2,800
3,181	3,299	3,015	3,107	3,304	3,116	2,938
3,055	2,835	2,830	2,991	2,952	2,864	



Water ID: 2222-001
LDC Acc: # 542210
LDC Meter # 12345

Day	Date	Th
Sun	1	3365
Mon	2	2977
Tue	3	3119
Wed	4	2897
Thu	5	3161
Fri	6	2818
Sat	7	2818
Sun	8	3066
Mon	9	2777
Tue	10	3119
Wed	11	3215
Thu	12	3319
Fri	13	2989
Sat	14	2800
Sun	15	3181
Mon	16	3299
Tue	17	3015
Wed	18	3107
Thu	19	3304
Fri	20	3116
Sat	21	2938
Sun	22	3055
Mon	23	2835
Tue	24	2830
Wed	25	2991
Thu	26	2952
Fri	27	2864
Sat	28	0
Sun	29	0
Mon	30	0
Tue	31	0

Total Th: 81,471

*Usage indicated above are for the day from 5 a.m. to 5 p.m. For accurate day usage for the period beginning Sunday at 5 a.m. and ending Monday at 5 a.m.

The data presented in this report is provided in a best-effort basis. This data comes to us from the local utility, is not final, and is therefore subject to change throughout the month. To receive a more accurate and timely report, consider installing individual, or submetered meters. You may view sample features of EnerPro (EnerPro) by clicking the information link below.

Constellation NewEnergy - Gas Division
PO Box 2228
N21 W2340 Ridgeway Parkway Suite B
Waukegan, WI 53187-2228

Your account manager is
(to be determined)

tel: 262.506.6600
fax: 262.506.6611
www.enerpro.net

CONFIDENTIAL

Constellation
NewEnergy
Gas Division

ABC COMPANY
Usage Overview / Peak Analysis

05/11/05
1662-004

The data presented in this report is provided on a best-effort basis. This data comes to us from the local utility, is not final, and is therefore subject to change throughout the month. To receive a more accurate and timely report, consider installing individual, or submetered meters. You may view sample features of EnerPro (EnerPro) by clicking the information link below.

Usage through: 05-07-2005	Historical Usage (in Therms)					1-Yr Avg	
	2005	2004	2003	2002	2001	2000	
Jan	116,082	91,888	109,331	99,853	106,458	145,487	103,376
Feb	104,830	87,565	100,422	90,972	91,050	124,480	96,199
Mar	118,898	95,538	105,688	107,169	95,771	105,352	106,268
Apr	85,341	92,225	102,668	96,565	90,024	106,492	94,083
May	81,472	89,354	112,919	111,783	95,857	113,177	101,137
Jun		85,767	91,994	104,270	86,082	105,845	88,876
Jul		81,560	90,823	99,205	93,009	100,746	86,192
Aug		83,156	89,489	90,720	97,441	86,743	86,323
Sep		82,833	90,085	97,014	91,465	84,766	86,453
Oct		85,182	95,811	107,178	87,953	89,568	95,397
Nov		101,778	85,379	96,807	95,907	95,835	93,879
Dec		115,405	88,375	105,417	100,295	112,141	101,890
Total Ther	574,323	1,102,002	1,164,374	1,205,913	1,131,297	1,257,047	

Meter Information

Code: N8A2-001
LDC: PSL
LDC Acc: 1500019477035
LDC Class: -ST
Class Type:
Alternate Fuel: none
Meter Number: 42401
Meter Name:
Pool Election:
Date: Sat, Jul 16
Weather Location: Chicago

Peak Use Analysis

Date	Day	Therms
Apr 6, 2003	Sun	6,982
Jan 31, 2000	Mon	4,694
Jan 30, 2000	Sun	4,694
Jan 29, 2000	Sat	4,694
Jan 28, 2000	Fri	4,694
Jan 27, 2000	Thu	4,693
Jan 26, 2000	Wed	4,693
Jan 25, 2000	Tue	4,693
Jan 24, 2000	Mon	4,693
Jan 23, 2000	Sun	4,693
Jan 22, 2000	Sat	4,693
Jan 21, 2000	Fri	4,693
Jan 20, 2000	Thu	4,693
Jan 19, 2000	Wed	4,693
Jan 18, 2000	Tue	4,693

Meter Location

5001 W PULKE ST
CHICAGO, IL 60644

Constellation NewEnergy - Gas Division
N21 W2340 Ridgeway Parkway, Suite B
PO Box 2228
Waukegan, WI 53187-2228

Your account manager is:
Liz Reents
liz.reents@constellation.com

CONFIDENTIAL/Marking
tel: 262.506.6600
fax: 262.506.6611
www.enerpro.net



EnerPro[®] expedites your analyses needs with:

The availability of accurate information that lets facility and operations teams make informed energy decisions.

The ability to compare, monitor, and benchmark multiple facilities at the same time to optimize operational efficiency.

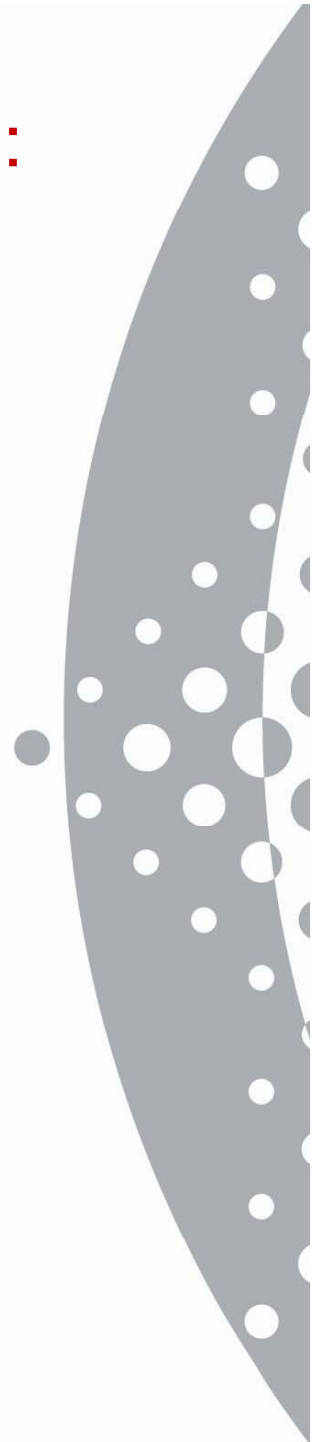
The capability to monitor loads to identify opportunities for improving efficiency and cost related savings.

The capacity to compare historical data for trend analysis.

The power to view daily updated usage information on-line.



Constellation Energy



IEC Natural Gas Program Membership has its Privileges:

- A natural gas purchasing program that is **tailored to your needs** and **will help your control natural gas costs & aid in achieving energy budget goals**
- An **experienced account manager**, who is responsible for managing your accounts and available by a toll-free number for all questions
- IEC's program administrator's **regulatory expertise** – to analyze strategies for proposed utility rate changes and utility tax increases.
- 45-day payment terms with an **optional early-pay discount program**.
- Locally Based **Annual Energy Conferences and Regional Workshops** that keep you & your team informed and educated.
- A Web-based customer information system named **EnerPro[®]** that provides access to account specific reports, historical data, invoices, weekly market updates and market intelligence reports.
- A financially strong program administrator and supplier with **16-Years** of proven experience in the Illinois deregulated market, a **95%**



Constellation Energy

NEXT STEPS WE NEED TAKE TOGETHER:

Terminate your current suppliers agreement in writing and copy the utility (we have a form letter that we can send you if needed)

Meet again with me your IEC new business development representative to review and agree upon the IEC natural gas program options that best fit your needs and goals.

You shall receive an IEC Natural Gas Member agreement to complete and return.

The IEC shall switch your accounts over to the chosen natural gas program



Constellation Energy

IEC Natural Gas Program Day to Day Contacts

Glen Grimm – New Business Development

Office: 630-264-6600

Cell: 630-205-6454

E-mail: glen.grimm@constellation.com

Fax: 630-264-6611

Day-to-day contact:

Liz Peronto – IEC Account Manager

Office: 262-506-6614

E-mail: liz.peronto@constellation.com

Fax: 262-506-6611



Constellation Energy®

IEC Contacts on the Illinois ASBO Team

IEC Natural Gas Program Contacts:

Ronald C. Steigerwald - IEC

Statewide Marketing Director

Cell: 847-567-3051

E-mail: rsteigerwald@hotmail.com

Fax 847-634-8254

Holly Wallace

Secretary for Special Services

Illinois ASBO

815.753.9083 tel

815.753.9367 fax

hwallace@niu.edu

www.iasbo.org



Constellation Energy

Disclaimer

The information contained in this report has been obtained from sources which Constellation NewEnergy – Gas Division (“CNEG”) believes to be reliable. We do not represent or warrant as to its accuracy or completeness. All representations and estimates included in this presentation constitute CNEG's judgment as of the date of the presentation and may be subject to change without notice. This presentation has been prepared solely for informational purposes. CNEG shall not be responsible for any reliance upon any information, opinions, or statements contained herein or for any omission or error of fact. All prices referenced herein are indicative and informational and do not connote the prices at which CNEG may be willing to transact. This report shall not be reproduced (in whole or in part) to any other person without the prior written approval of CNEG. Copyright 2011.

© 2011. Constellation Energy Group, Inc. The information provided herein is the proprietary information of Constellation NewEnergy - Gas Division, LLC (CNEG) and Illinois Energy Consortium Inc. (IEC), respectively. Offerings and products described herein are sold and contracted by CNEG, a subsidiary of Constellation Energy Group, Inc. Service marks and trademarks are those of their respective holders. CNEG and IEC have not undertaken a joint venture or partnership and are separate and unaffiliated entities who are not responsible for each others' actions, inactions, products or policies. All rights reserved. Errors and omissions excepted



Constellation Energy

