



Cashman Stahler Group

June 11, 2015

Dr. Steven Baule
Superintendent
North Boone Community Unit School District 200
6248 N. Boone School Road
Poplar Grove, IL 61065

Site Improvements 2015 Multiple District Facilities Project CSG616

Dr. Baule,

The Bids for the proposed Site Improvements work at the Capron Elementary School, the Middle School and the High School were publicly opened on June 9, 2015 at 2:00 PM. A total of twelve (12) bidders were contacted by our office, eight (8) bidders requested Bid Documents, and two (2) bidders submitted Bid Proposals. The Base Bid cost ranged between \$220,368 (William Charles Construction) and \$277,976. The combined total cost of the Base Bid and all four (4) of the Alternate Bids ranged between \$366,749.73 (for William Charles Construction) and \$454,101. (The attached Bid Tabulation itemizes the base bid and alternate bids for the bidders).

Eriksson Engineering (the project civil engineer) has contacted the low bidder, William Charles Construction, to review their bids. Based on these discussions, Eriksson has confirmed the low-bidder's Base Bid and Alternate Bid numbers appear to be complete and responsive. The numbers provided by William Charles are within the District's budget. Additionally, based on our discussions with Eriksson Engineering, the bid numbers for the proposed scope of work are very competitive when compared to other project bid numbers they have received this year.

The scope of work included in each of the bid numbers is summarized as follows:

- The **Base Bid** includes the replacement of the existing south parking lot asphalt pavement and the milling and resurfacing of the south entrance drive asphalt (and concrete curb replacement) at the North Boone Middle School.
- **Alternate Bid One** includes the milling and resurfacing of a section of the entrance drive asphalt pavement and seal coating and re-striping the west parking lot at the North Boone High School.
- **Alternate Bid Two** includes the milling and resurfacing of an additional portion of the entrance drive asphalt pavement at the North Boone High School.



Cashman Stahler Group

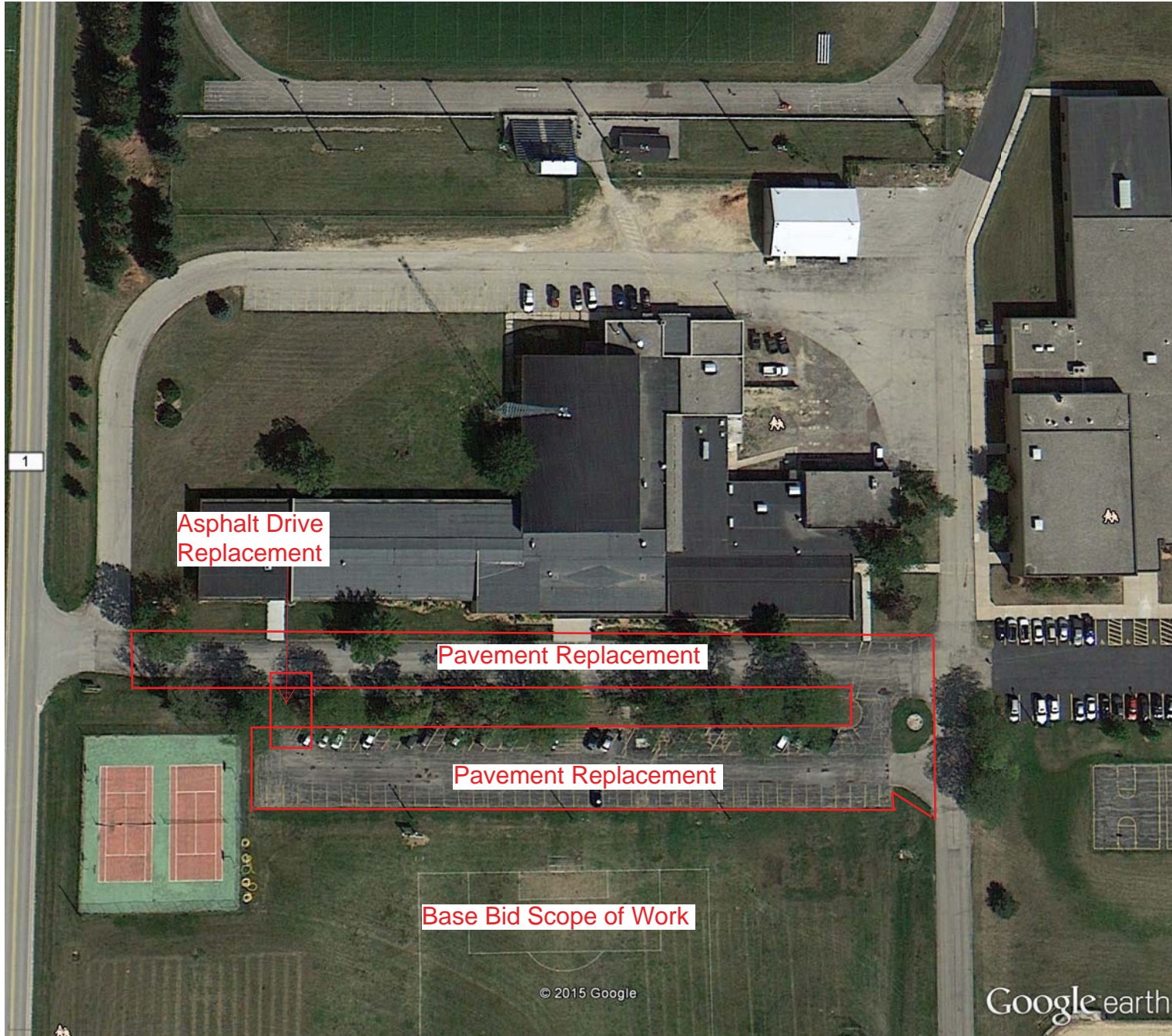
- **Alternate Bid Three** includes the milling and resurfacing of the north portion of the entrance drive/parking lot asphalt pavement, expanding the asphalt pavement further north, and seal coating and re-striping the parking lot at the Capron Elementary School.
- **Alternate Bid Four** includes the milling and resurfacing of the south portion of the entrance drive/parking lot asphalt pavement and expanding the asphalt pavement further south at the Capron Elementary School.

I have attached site plans of each of the facilities to further illustrate the Base Bid and the Alternate Bid scope of work.

Sincerely,

A handwritten signature in blue ink, appearing to read 'G. Stahler', is positioned above the typed name.

Gregory M. Stahler
CASHMAN STAHLER GROUP



Asphalt Drive Replacement

Pavement Replacement

Pavement Replacement

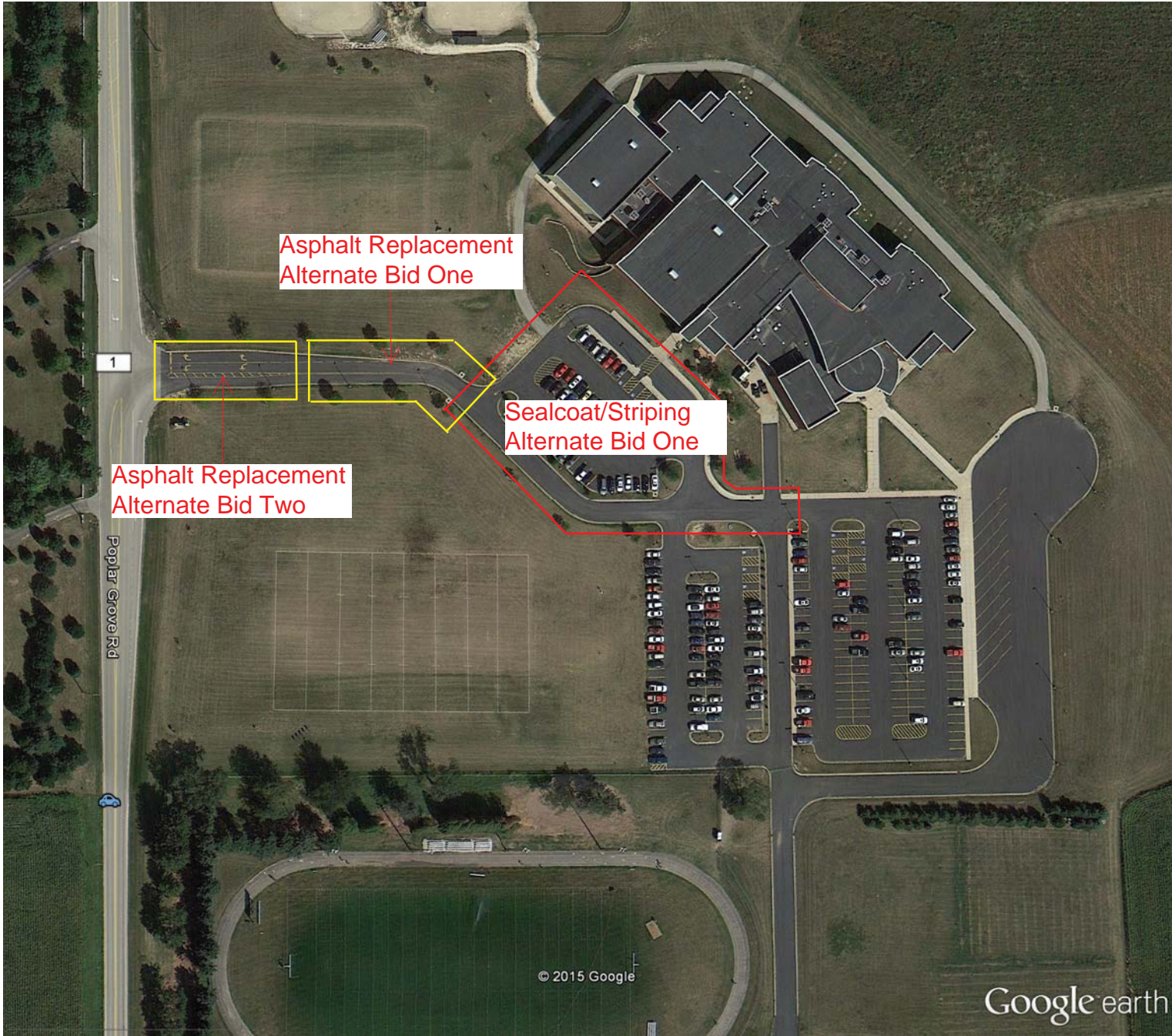
Base Bid Scope of Work

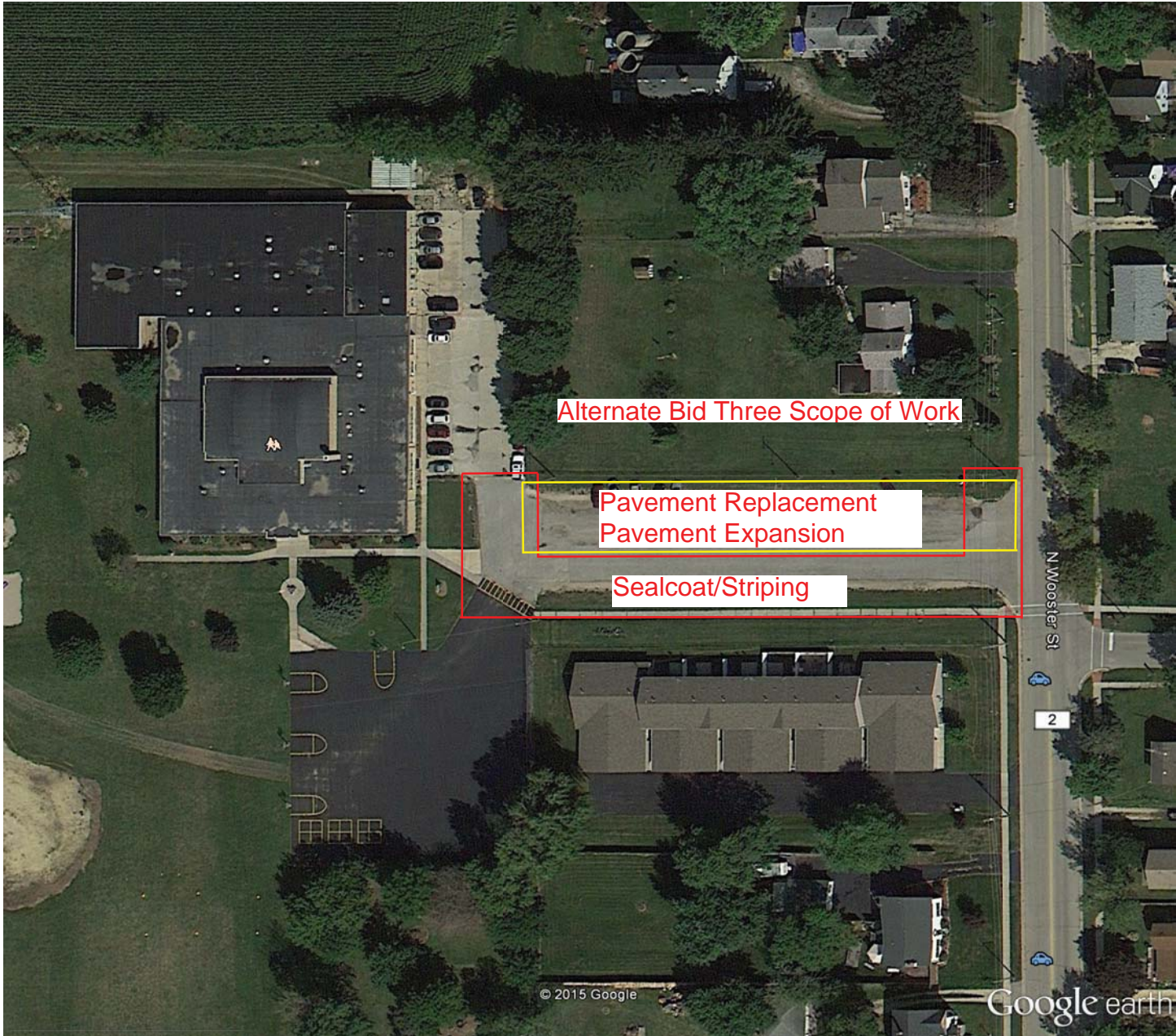
© 2015 Google

Google earth

Google Earth Pro







Alternate Bid Three Scope of Work

Pavement Replacement
Pavement Expansion

Sealcoat/Striping

N Wooster St

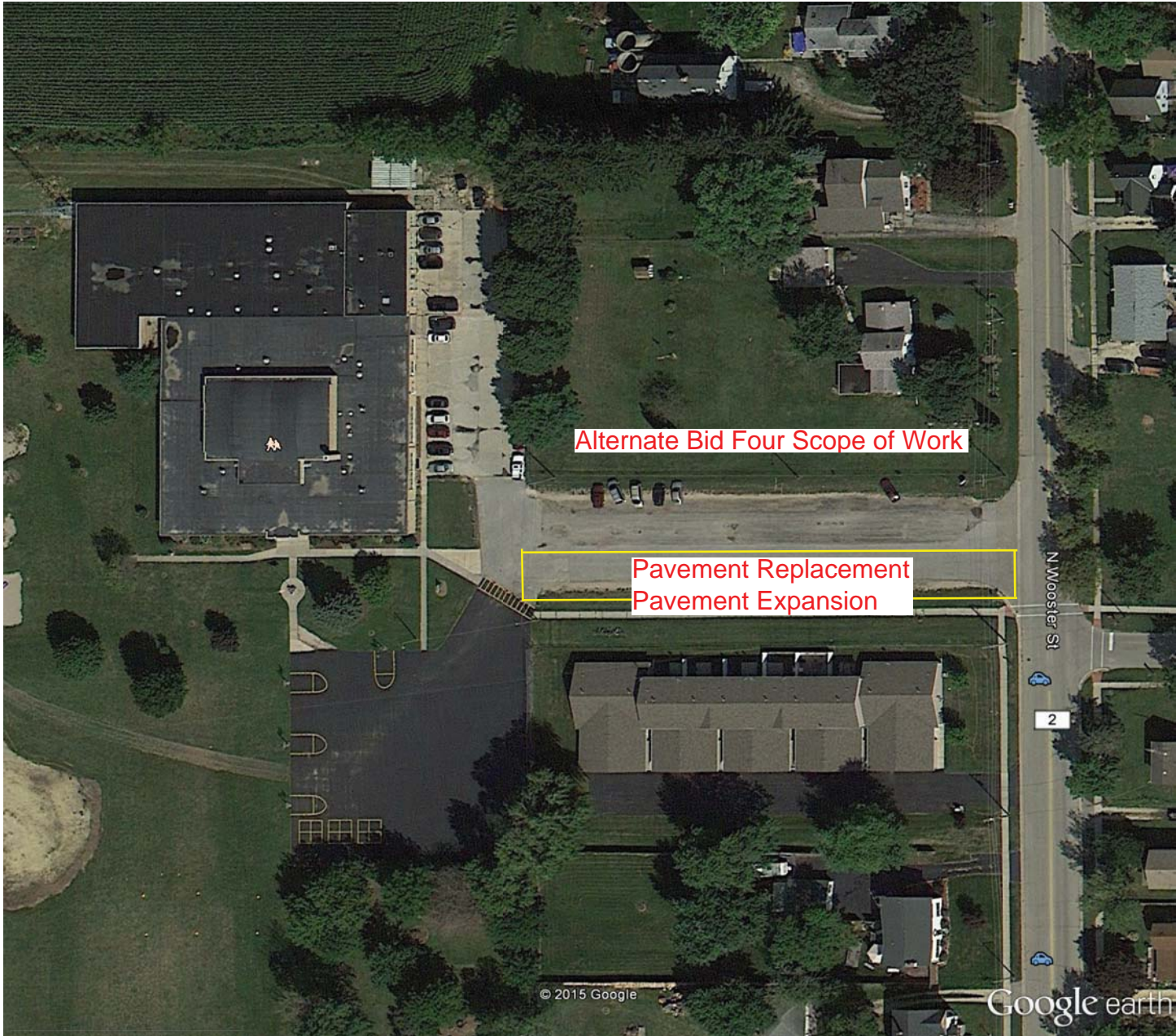
2

© 2015 Google

Google earth

Google Earth Pro





Alternate Bid Four Scope of Work

Pavement Replacement
Pavement Expansion

N Wooster St

2

© 2015 Google

Google earth

Google Earth Pro



