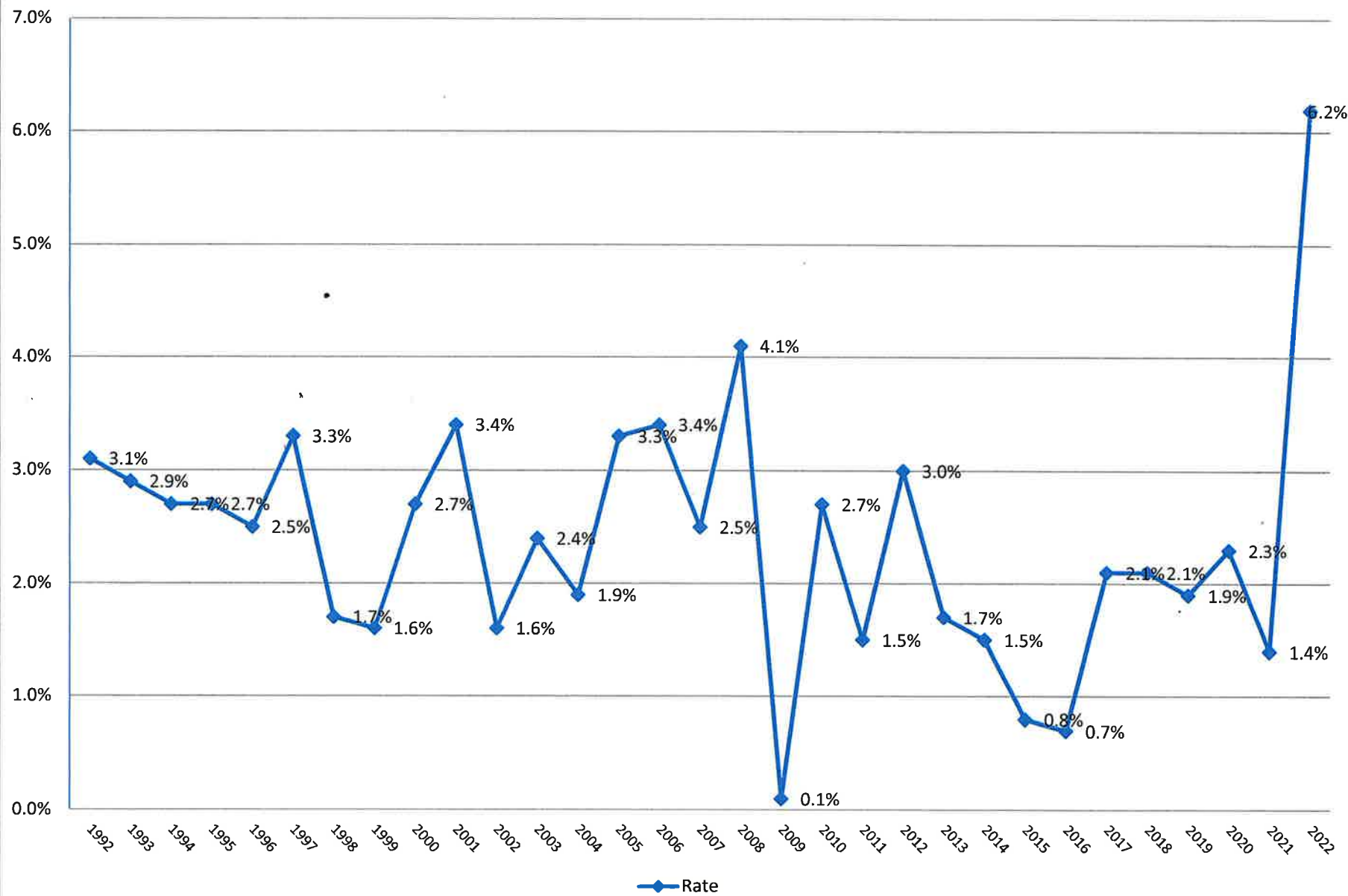


# CPI Historical Trend



## CPI Trends

<b>CPI-U Change</b>	<b>Rate</b>	<b>Tax Levy</b>	<b>Fiscal Year</b>	
December 1990 - 1991	3.1%	1992	1993	
December 1991 - 1992	2.9%	1993	1994	
December 1992 - 1993	2.7%	1994	1995	
December 1993 - 1994	2.7%	1995	1996	
December 1994 - 1995	2.5%	1996	1997	
December 1995 - 1996	3.3%	1997	1998	
December 1996 - 1997	1.7%	1998	1999	
December 1997 - 1998	1.6%	1999	2000	
December 1998 - 1999	2.7%	2000	2001	
December 1999 - 2000	3.4%	2001	2002	
December 2000- 2001	1.6%	2002	2003	
December 2001 - 2002	2.4%	2003	2004	
December 2002 - 2003	1.9%	2004	2005	
December 2003 - 2004	3.3%	2005	2006	
December 2004 - 2005	3.4%	2006	2007	
December 2005 - 2006	2.5%	2007	2008	
December 2006 - 2007	4.1%	2008	2009	
December 2007 - 2008	0.1%	2009	2010	
December 2008- 2009	2.7%	2010	2011	
December 2009- 2010	1.5%	2011	2012	
December 2010- 2011	3.0%	2012	2013	
December 2011- 2012	1.7%	2013	2014	
December 2012- 2013	1.5%	2014	2015	
December 2013- 2014	0.8%	2015	2016	
December 2014 -2015	0.7%	2016	2017	
December 2015 -2016	2.1%	2017	2018	
December 2016 -2017	2.1%	2018	2019	
December 2017 -2018	1.9%	2019	2020	
December 2018 -2019	2.3%	2020	2021	
December 2019 -2020	1.4%	2021	2022	
December 2020 -2021	6.2%	2022	2023	<b>Average</b> 2.380%