

ATTACHMENT NO. XI-A: Resolution Supporting Wind Farm Development

Suggested Motion: Move to approve the Resolution to support wind farm development in Boone County

Recommended Action: Approve the motion.

The Board has met with wind farm developers in the past and has researched information on a wind farm in the vicinity. U.S. Mainstream Renewable Power, Inc. has approached the District asking that we support a wind farm project in Boone County. As stated in the attached Resolution, the school district as well as other taxing bodies will benefit in the receipt of property tax revenues. Attached is the information presented at the wind farm meeting on June 15.

**A RESOLUTION IN SUPPORT OF THE NORTH BOONE WIND FARM PROJECT TO
BE DEVELOPED BY U.S. MAINSTREAM RENEWABLE POWER, INC. ON
PROPERTY LOCATED IN BOONE COUNTY, ILLINOIS**

WHEREAS, The Board of Education (“Board”) of North Boone Community Unit School District No. 200 (“District”) has been informed of proposed plans to construct a wind farm (“Project”) by U.S. Mainstream Renewable Power, Inc. (“Developer”) titled North Boone Wind Farm to be located in Boone County, Illinois (“County”); and,

WHEREAS, the majority of the property upon which Developer proposes to construct the Project is located within the boundaries of the District; and

WHEREAS, it is proposed that the Project would contain approximately 200 megawatts of power, the majority of which would be located within the taxing jurisdiction of the District; and

WHEREAS, the Developer has created an Illinois corporation, GSG 2 LLC, which is in the process of entering into leases with landowners who own land within the taxing jurisdiction of the District; and

WHEREAS, for the reasons set forth herein, the District wishes to express its support for the Project, including support for any application filed on behalf of the North Boone Wind Farm Project for a conditional use permit or any other permit or authorization in the County.

**NOW, THEREFORE, BE IT RESOLVED BY THE BOARD OF EDUCATION OF
NORTH BOONE COMMUNITY UNIT SCHOOL DISTRICT NO. 200 AS FOLLOWS:**

Section 1. Recitals Incorporated. The above recitals are incorporated herein by reference as though fully set forth.

Section 2. Property Tax Revenues Generated by the Project for the District. The estimated total property tax revenue generated by the Project on a yearly basis solely for the District is approximately \$1,300,000.

Section 3. Property Tax Revenues Generated by the Project for Boone County. The estimated total property tax revenue generated by the Project for Boone County is \$30 million.

Section 4. Support for Conditional Use. Due to the property tax revenues which may be generated by this Project for the District and other taxing districts in Boone County, the District Administration is authorized to support the Developer, including support for any application filed on behalf of the North Boone Wind Project for a conditional use permit or any other permit or authorization in the County.

Section 5. Effective Date. This Resolution shall take effect from and after its adoption and approval.

PASSED this 20th day of June 2011

AYES:

NAYES:

ABSENT:

APPROVED this 20th day of June 2011.

Donald Ward, President, Board of Education

ATTEST

Thomas Kinser, Secretary, Board of Education



**PROJECT TEAM
MEMBER PROFILE:
JOHN MARTIN**

John Martin is Mainstream's new Senior Development Project Manager. John's primary responsibilities will include oversight of the permitting efforts for Boone County. Additionally, he will manage several other projects and related tasks that run concurrent to permitting, such as environmental studies, interconnection agreements, engineering design, and power purchase agreements.

John's approach to a successful project is one that works well for the developer and all the other stakeholders including landowners, counties, and neighboring municipalities. "I pride myself on being honest and forthright with everyone who is involved in a project. They deserve to know how the project is progressing and how they can help move it forward."

Mainstream's company values fit well with John's passion for sustainable, well-managed projects. "Mainstream wants to create success for all the participants in a project. Building strong relationships with common goals and being open to dialogue along the way are keys."

John's education includes a Bachelors of Science in Civil/Environmental Engineering from Marquette University and a Masters of Business Administration from DePaul University.

COME CELEBRATE GLOBAL WIND DAY 2011

Mainstream Renewable Power

cordially invites The Boone County Community to
an Open House on Wednesday, June 15th

WHERE Mainstream Renewable Power
305 West Grove, Poplar Grove, IL

WHEN 3:00p.m. to 7:00p.m.
Please drop in at your convenience.

PURPOSE This family friendly event is being held to share details of the proposed North Boone County Wind Farm with your community.

Come learn about:

- Mainstream Renewable Power.
- The planning and development of a commercial wind farm from start to finish.
- The time line for the North Boone County proposed project.
- The Potential Economic Benefit to Boone County.
- The history of wind energy and Global Wind Day.
- The safety of wind farm projects.
- The positive impact of Renewable Power and how it works in tandem with Traditional Agriculture.

This fun event is an opportunity to meet the Mainstream Renewable Power team, ask questions and share knowledge. There will be door prizes and a grand prize drawing featuring local merchandise.

For children there will be coloring books and fun surprises. Refreshments will be served.

HOPE TO SEE YOU SOON!

For more information contact John Martin on 312-445-3709 or email John.Martin@mainstreamrp.com

CONTACT US

Visit our website: www.mainstreamrp.com

Call us at our Chicago Office: 312-445-3700

Fax your comments marked "North Boone Wind Farm" to 312-445-3737.

Write to us at: 190 S. LaSalle, Suite 1120, Chicago, IL 60603.



PRINTED ON
RECYCLED PAPER



MAINSTREAM RENEWABLE POWER



North Boone Wind Farm

Project Update 1
June 2011

WELCOME

As planting time has begun, it is a busy time in the fields, and it is a busy time here at Mainstream too. We are excited to announce that we will be hosting an OPEN HOUSE in Poplar Grove at the North Boone Fire Station on June 15th, Global Wind Day. Please find a detailed invitation on the next page. Mainstream is excited about this opportunity to meet more of the community.

PROJECT UPDATE

- Mainstream Renewable Power and the North Boone Wind Farm team began calling on landowners last summer. We very much appreciate the receptivity of the people of Boone County. We are happy to report that we have close to 8,000 acres of land signed on to the project, with an additional 800 acres recently committed. We are close to reaching our target for signed acres, so if you have been thinking about being involved, please let us know soon!
- Events: In November, a Landowner dinner was held in Belvidere, Illinois. We had an amazing turnout; over 140 landowners attended. In February we hosted a bus tour for landowners to visit wind farms, and were again pleased by the excellent response as 45 people joined us for an educational day and tour.
- A 196 foot met mast is being installed in Leroy Township to gather additional wind data. There is also significant data from towers which have been in place, neighboring the project in Boone County for some time.
- Mainstream expects to receive its System Impact Study from ComEd and PJM (the regional transmission grid operator) this fall. This will be a major milestone and will bring Mainstream closer to signing an agreement to connect the project to the electrical transmission system (the grid). Each milestone along the path to connecting with the grid requires significant time and investment. Mainstream must post additional security to move the studies forward, and we hope this demonstrates our commitment to the project.
- We are working with the Illinois Department of Natural Resources (IDNR) and US Fish and Wildlife Service (USFWS) to ensure we are meeting all their requirements. Studies will be commencing in the coming months to make sure we capture all the right data so we can get productive feedback from the USFWS and IDNR regarding our project plans.
- We look forward to seeing you at the Global Wind Day Open House on June 15th. See the next page for more details!

LANDOWNER SPOTLIGHT FRIENDLY FRANSEEN ACRES FARM

The Franseen family farm is located in Northern Boone County.

Jeremy and Dad, Rick converted the farm from dairy cattle to goats in 1997. They milk about 100 goats, selling milk commercially to cheese plants. They also produce lotions and soaps.

Brother Joshua is responsible for farming corn and bean crops.

Jeremy and Joshua's Great Grandparents emigrated from Sweden to Northern Illinois. After returning from World War II, their son, (Jeremy and Joshua's Grandfather) began farming at the current farmstead.

In 1975 Rick took over the operation from his father and purchased in 1996. In addition to farming, Rick is the Plant Manager of Conserv FS in Caledonia, and wife Pam is Village Clerk in Clinton, Wisconsin.

As the third generation to farm Friendly Franseen Acres, Jeremy hopes to see many generations to come farming their land.

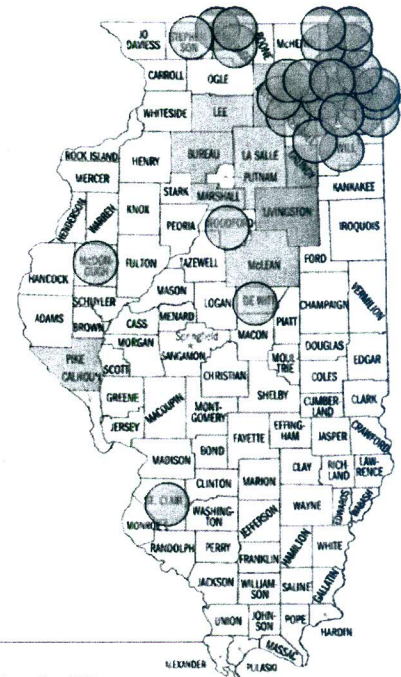
The Franseens support the North Boone Wind Farm, because it will help support the future sustainable agriculture and renewable power.

For more information about the Franseen's farm, visit them online at <http://friendlyfranseenacres.com>.

WIND ENERGY FACTS: ILLINOIS

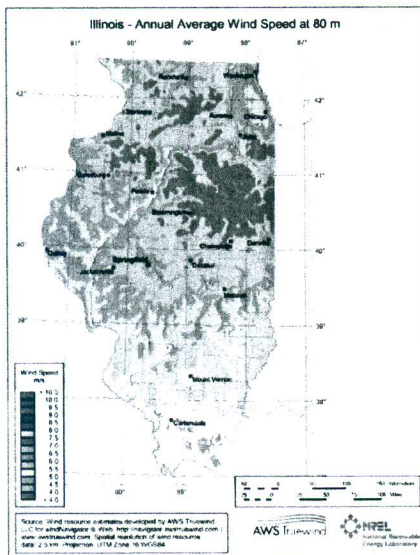
Illinois is a leader in wind energy capacity and manufacturing

Illinois is a national leader both in terms of installed capacity of wind power and wind turbine manufacturing. The state ranks sixth for overall installed wind capacity in the U.S., with great potential to increase the amount of electricity produced from wind. Investment in wind energy has brought jobs to the state and attracted major wind energy manufacturers to locate in Illinois.



Blue counties have wind projects.
Green dots are online wind energy manufacturing facilities.

WIND PROJECTS AND GENERATION



| | |
|-------------------------|----------------------|
| Currently online: | 2,286 megawatts (MW) |
| Added in 2011: | 239.4 MW |
| Added in 2010: | 498 MW |
| Under construction: | 501 MW |
| Wind projects in queue: | 16,284 MW |

Illinois ranked second in 2010 for most new wind added.

Percentage of Illinois power provided by wind in 2010: 2.2%

Equivalent number of homes Illinois wind farms now power: 550,000

WIND RESOURCE

State wind resource: 249,882 MW at 80 meters hub heights

Illinois' wind resource is ranked 14th in the US and according to a resource assessment from the National Renewable Energy Lab, Illinois' wind resource could provide over 525 percent of the state's current electricity needs.

FOR MORE INFORMATION, PLEASE CONTACT: windmail@awea.org

AMERICAN WIND ENERGY ASSOCIATION

WWW.AWEA.ORG | 202.383.2500 | 1501 M St. NW, Suite 1000, WASHINGTON, D.C.



WIND ENERGY FACTS: ILLINOIS

ECONOMIC AND ENVIRONMENTAL BENEFITS

Investment in wind power is an investment in jobs, including jobs in operations and maintenance, construction, manufacturing and many support sectors. In addition, wind power projects produce lease payments for landowners and increase the tax base of communities.

- Total direct and indirect jobs supported in 2010: 5,000-10,000
- Annual property tax payments by wind project owners: over \$15 million
- Annual land lease payments: over \$6 million

Generating wind power creates no emissions and uses no water. The wind power installed in Illinois will avoid 3.9 million metric tons of carbon dioxide annually.

MANUFACTURING SECTOR

Illinois has already attracted investment from three major wind industry players, including tower manufacturer Trinity Structural Towers and gearbox manufacturer Winergy, allowing many smaller manufacturers to get involved in the wind energy supply chain. At least 28 facilities in Illinois currently manufacture components for the wind energy industry. Over one thousand workers in Illinois are employed in the wind energy manufacturing sector.

ILLINOIS POLICY

The Illinois state renewable portfolio standard (RPS) was first enacted in 2007, requiring investor-owned electric utilities, and later alternative retail electric suppliers, to generate 25% of their 2025 electricity from renewable resources.

EVENTS

In May 2009, AWEA hosted its annual WINDPOWER Conference and Exposition in Chicago, attracting over 23,000 participants. It was the largest annual wind energy conference ever.

Illinois exhibitors at WINDPOWER Conference and Exhibition 2010: 81

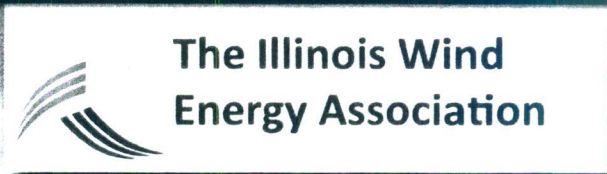
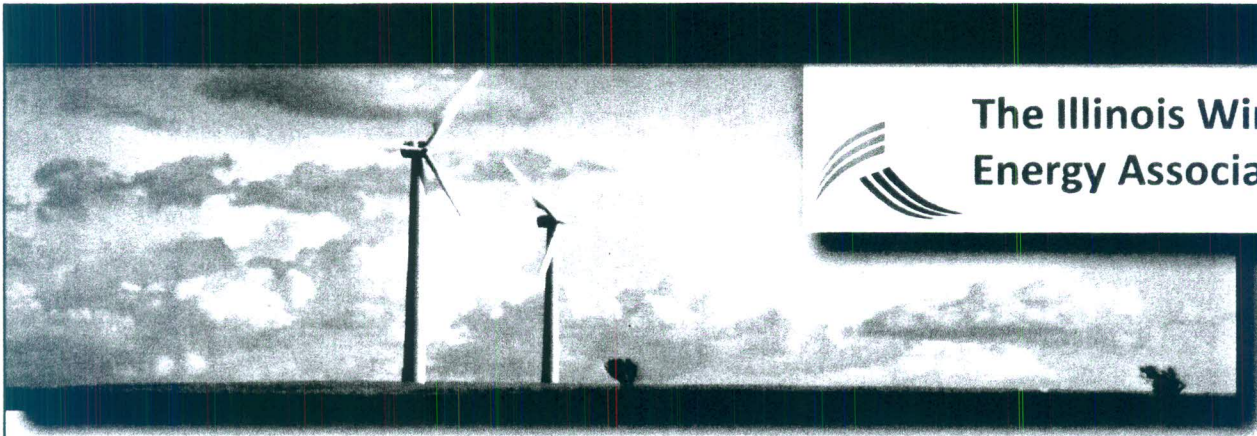
Published May 2011 | Calculations based on national and state averages

FOR MORE INFORMATION, PLEASE CONTACT: windmail@awea.org

AMERICAN WIND ENERGY ASSOCIATION

WWW.AWEA.ORG | 202.383.2500 | 1501 M St. NW, Suite 1000, Washington, D.C.





ILLINOIS WIND POWER FACTS

Illinois is now seeing a massive expansion in wind energy development. The state saw its first wind farm built in just 2003, but today Illinois is the seventh-largest US state for installed wind capacity.

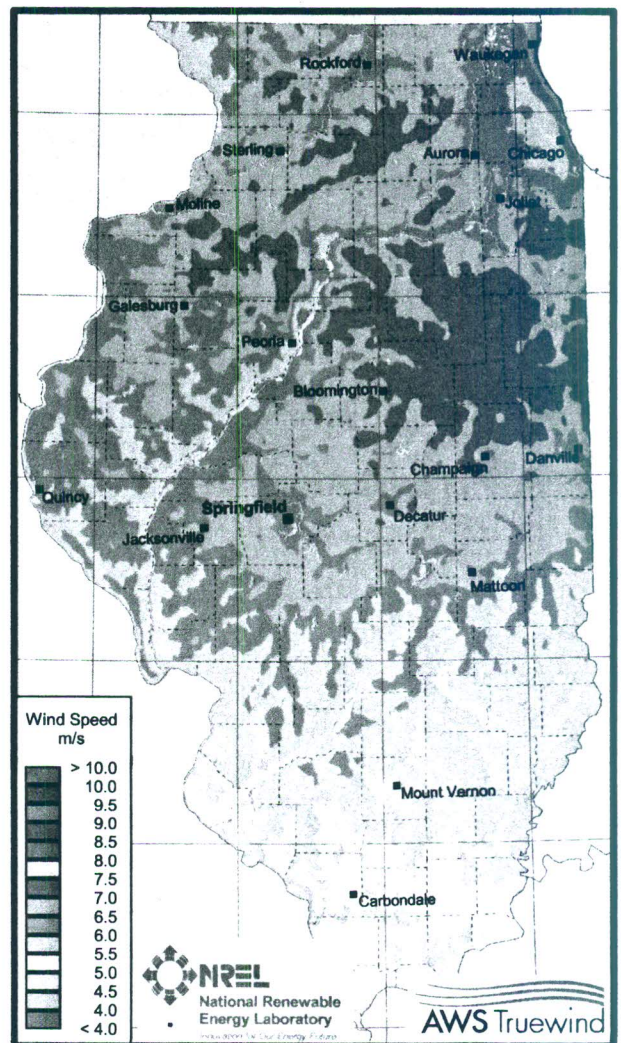
Illinois' wind investments help create jobs and revitalize rural communities while producing enough non-polluting, renewable electricity to power over one million US homes.

Why Illinois is a prime wind power state:

- ✓ Strong Wind Resource (at right)
- ✓ Smart Public Policy
- ✓ Robust Electric Transmission
- ✓ Access to Power Markets

Quick Facts About Wind Power in Illinois:

| | |
|-------------------------------------|------------------------------|
| Installed Capacity: | 2,253 MW² |
| Capacity Added in 2010: | 389 MW¹ |
| Permitted Projects: | 3,254 MW² |
| Projects in Planning Stages: | 16,284 MW¹ |



Help us bring more clean, emissions-free wind energy to Illinois

Visit www.WindforIllinois.org to learn more!

ILLINOIS' STRENGTHS: SMART POLICY & STRONG TRANSMISSION

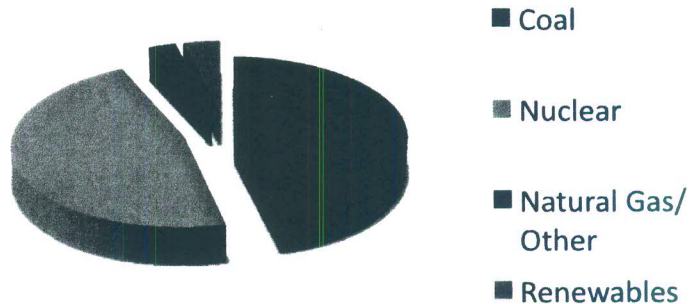
Illinois RES Law: 25% by 2025

Like most other states, Illinois has a Renewable Energy Standard (RES) law.

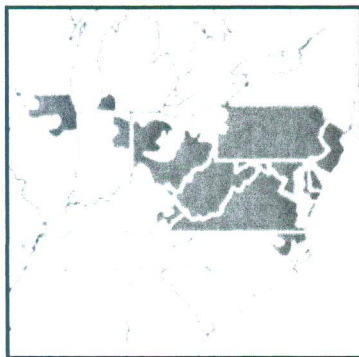
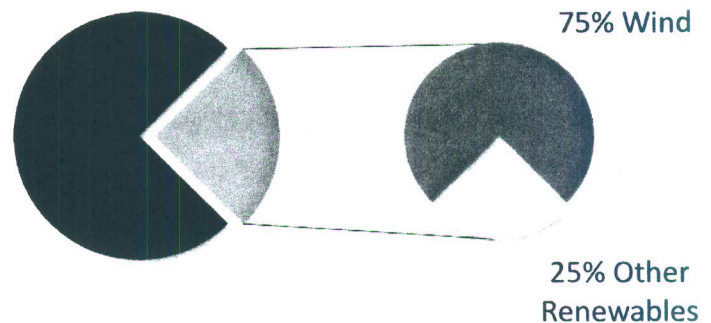
The law mandates that electric utilities must obtain 25 percent of their electricity from renewables by 2025. Three-quarters of that renewable energy must be wind!

The law also includes a consumer protection clause to ensure the RES does not raise electric bills more than *one-half percent* over the previous year.

Illinois' Electric Power Portfolio: Today⁴



Illinois' Electric Power Portfolio: 2025³



The PJM Interconnect

Transmission Infrastructure

Illinois has more high-voltage transmission lines than most states, allowing Illinois wind farms to deliver power to the large, Chicago-area electric market.

Much of Northern Illinois is also connected to the PJM electric grid, which serves over 50 million people in 13 states. Illinois has the strongest winds in the PJM market, making Illinois wind a valuable export commodity for our rural communities.

WIND POWER & ECONOMIC DEVELOPMENT

According to an analysis by the Center for Renewable Energy at Illinois State University⁵, the first 1,848 megawatts of wind capacity in Illinois:

- Will generate a total economic benefit of \$3.2 billion over the life of the projects
- Supports local economies by generating \$18 million in annual property taxes
- Generates \$8.3 million annually in extra income for Illinois landowners who lease their land to wind farm developers
- Created approximately 9,968 full-time equivalent jobs during construction periods with a total payroll of over \$509 million
- Supports approximately 494 permanent jobs in rural Illinois areas with a total annual payroll of over \$25 million

Quick Facts:

An average 100MW project creates:

- 150 temporary construction jobs²
- 10 permanent maintenance jobs²

Each megawatt of wind power constructed in Illinois provides:

- \$9,000 to \$13,000 per MW in annual local property tax revenue²

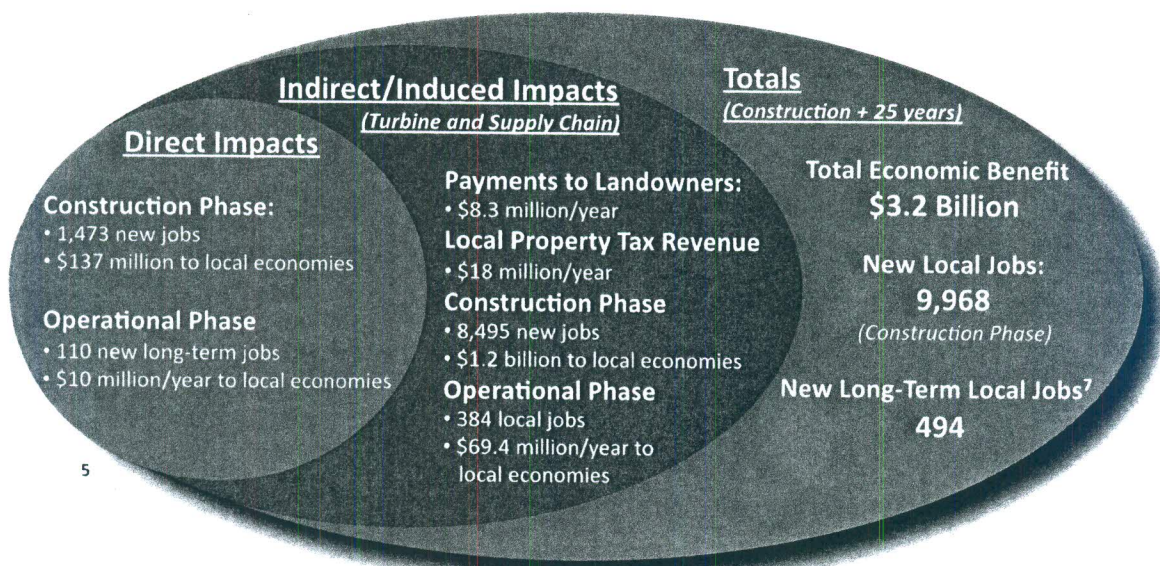
Each megawatt of wind power constructed in Illinois provides:

- \$3,000 to \$6,000 per MW in lease payments to landowners²

Estimated potential for wind development in Illinois:

- 10,000 megawatts⁶

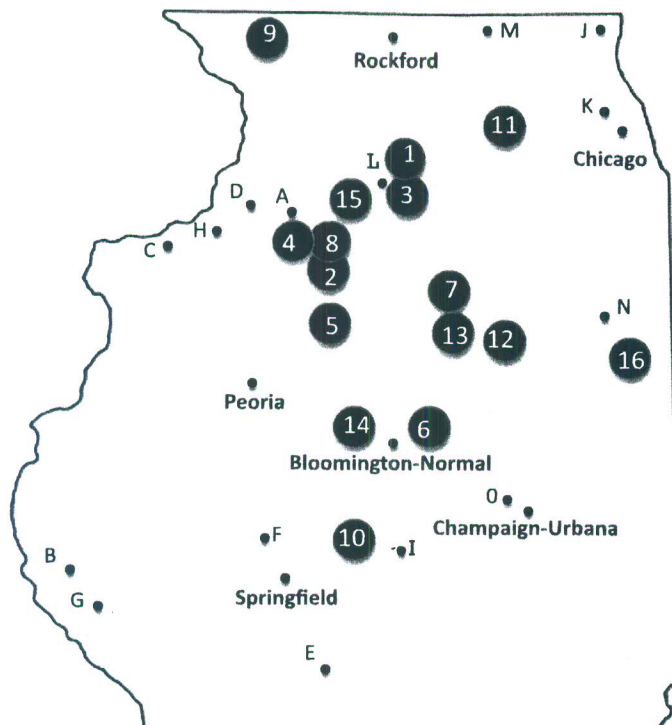
Wind Power & Economic Development: By the Numbers



5

1) American Wind Energy Association data for Q4 2010; 2) IWEA Data; 3) Illinois Public Act 95-0481 applies to major electric utilities; Public Act 95-1027 applies to alternative retail electric suppliers; 4) Illinois Commerce Commission Data; 5) Study from Illinois State University; available at: renewableenergy.ilstu.edu; 6) US Department of Energy Data; 7) Job calculations based on a full time equivalent (FTE) basis for a year; 1 FTE = 2,080 hours worked in a year. The study model assumes part time or temporary jobs would constitute only a fraction of a job, meaning that more than 9,968 people likely worked on Illinois wind projects.
Photo Credits: Bo Hansen, Steve Ford Elliot

ILLINOIS WIND FARMS: OVER 2200 MW INSTALLED!



Commercial Wind Farms in Illinois²

- 1) Mendota Hills Wind Farm (Lee Co)
63 Turbines/50.4 megawatts
- 2) Crescent Ridge Wind Farm (Bureau Co)
33 Turbines/54.45 megawatts
- 3) GSG Wind Farm (Lee/LaSalle Counties)
40 Turbines/80 megawatts
- 4) AgriWind Wind Farm – (Bureau Co)
4 Turbines/8.4 megawatts
- 5) Camp Grove (Marshall/Stark Counties)
100 Turbines/150 megawatts
- 6) Twin Groves Wind Farm (McLean Co)
240 Turbines/396 megawatts
- 7) Grand Ridge Wind Farm (LaSalle Co)
140 Turbines/210 megawatts
- 8) Providence Heights (Bureau Co)
36 Turbines/72 megawatts
- 9) EcoGrove Wind Farm (Stevenson Co)
67 Turbines/100.5 megawatts
- 10) Railsplitter (Logan/Tazewell Counties)
67 Turbines/100.5 megawatts
- 11) Lee-DeKalb Wind Farm (Lee/DeKalb Co)
151 Turbines/226.5 megawatts
- 12) Cayuga Ridge Wind Farm (Livingston Co)
150 Turbines/300 megawatts
- 13) Top Crop Wind Farm (LaSalle Co)
68 Turbines/102 MW
- 14) White Oak Wind Farm (McLean Co)
100 Turbines/150 MW
- 15) Big Sky Wind Farm (Bureau/Lee Co)
114 Turbines/239.4 MW

Community & Privately-owned wind turbines²:

- a) Bureau Valley School District (Bureau Co) – 660 kW
- b) Illinois Rural Electric Co-Op (Pike Co) - 1.65 MW
- c) Sherrard High School (Mercer Co) – 600 kW
- d) Erie School District (Rock Island Co) – 1.2 MW
- e) Gob Knob Turbine Co-Op (Montgomery Co) 900 kW
- f) PORTA School District (Menard Co) – 600 kW
- g) Pigeon Creek (Adams Co) – 900 kW
- h) Geneseo Municipal Utility (Henry Co) - 3 MW
- i) Richland Community College (Macon Co) – 100 kW
- j) Aldridge Electric (Lake Co) – 50 kW
- k) The Great Escape Restaurant (Cook Co) – 108 kW
- l) Turbine Adam (Lee Co) – 2.5MW
- m) Other World Computing (McHenry Co) – 500 kW
- n) Rabideau Grain & Lumber (Iroquois Co) – 510 kW
- o) Midwest Underground Technology (Champaign Co) – 100kW

Illinois Wind Power Totals

Total Turbines: 1389 turbines
Installed Capacity: 2253.8 megawatts



The Illinois Wind
Energy Association