



Artist Interpretation

1

# Rendering of Proposed Stadium from Northeast

No Scale

**Cashman Stahl Group**  
 1910 South Highland Avenue, Suite 310  
 Lombard, Illinois 60148  
 Telephone: (630) 889-8800  
 Web: www.cashmanstahl.com



Project:

**Stadium Study - North Boone High School**  
 17823 Poplar Grove Road, Poplar Grove, IL 61065

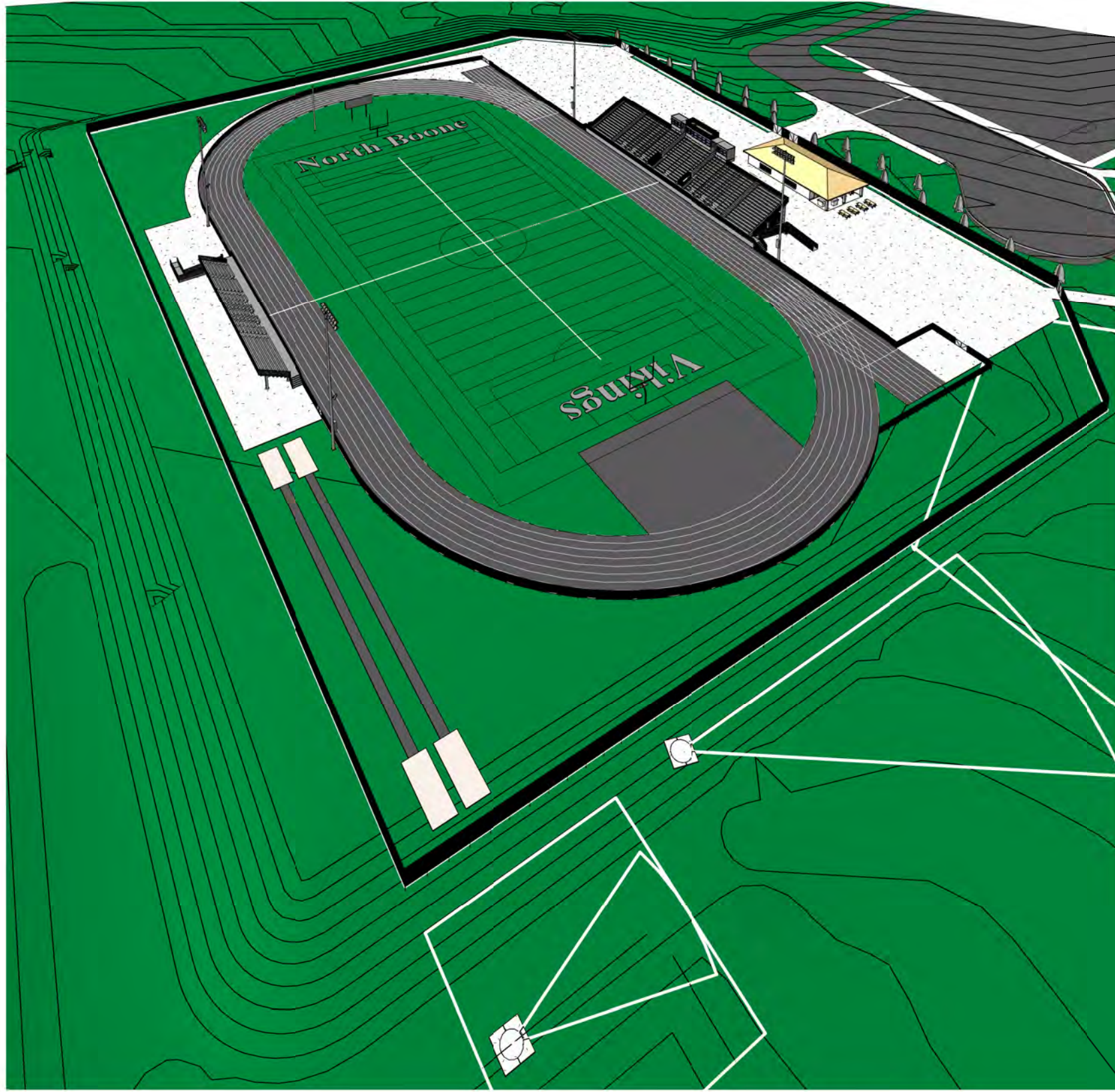
Date: 10/23/13

Project: CSG541

Client:

**North Boone Community Unit School District 200**  
 6248 N. Boone Road, Poplar Grove, IL 61065

**A000**



1

Proposed Stadium - Viewed from the Northeast

**Cashman Stahl Group**  
 1910 South Highland Avenue, Suite 310  
 Lombard, Illinois 60148  
 Telephone: (630) 889-8800  
 Web: www.cashmanstahl.com



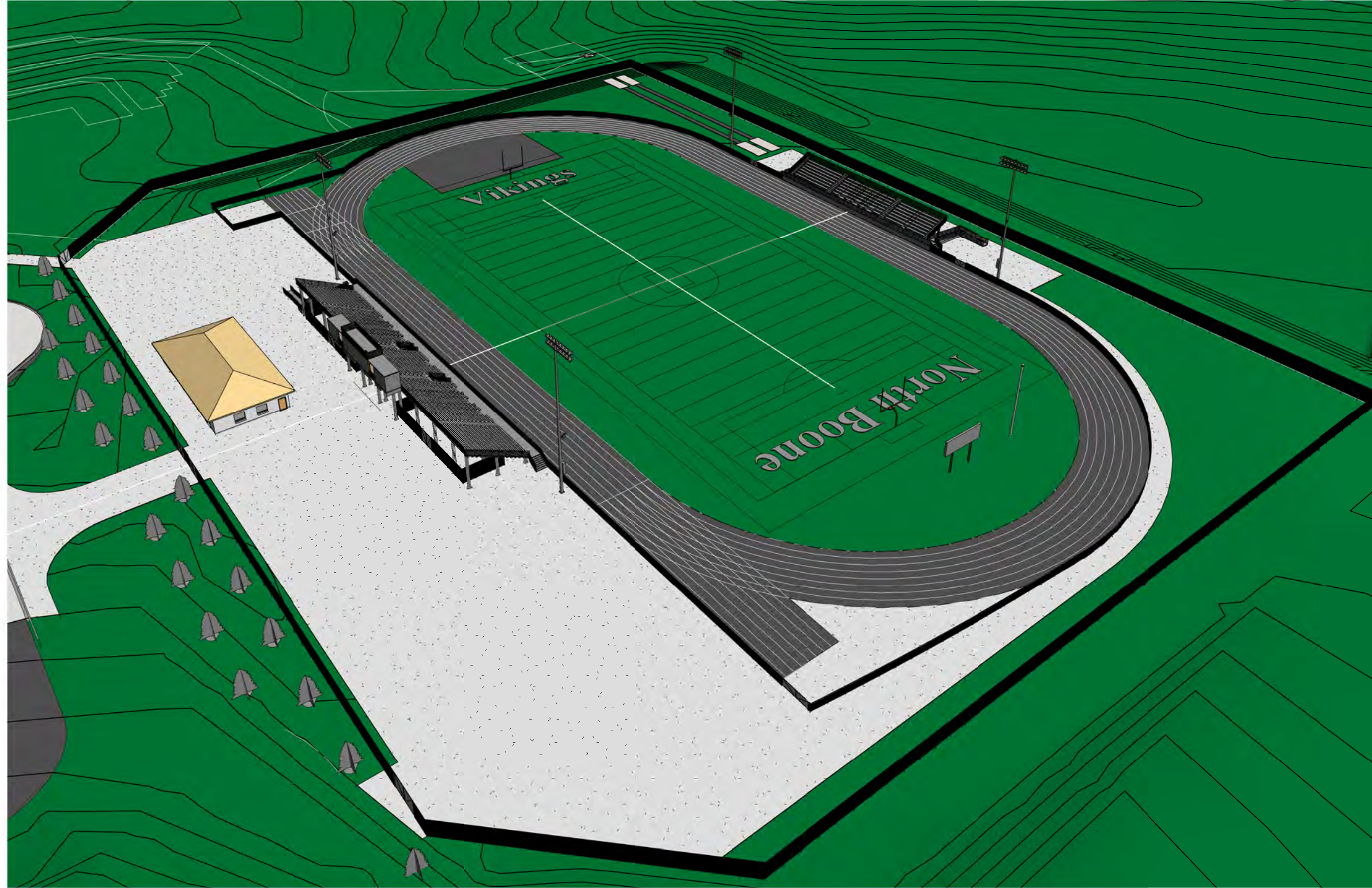
Project: **Stadium Study - North Boone High School**  
 17823 Poplar Grove Road, Poplar Grove, IL 61065

Client: **North Boone Community Unit School District 200**  
 6248 N. Boone Road, Poplar Grove, IL 61065

Date: 10/23/13

Project: CSG541

**A001**



1

Proposed Stadium - Viewed from the Southwest

**Cashman Stahler Group**  
 1910 South Highland Avenue, Suite 310  
 Lombard, Illinois 60148  
 Telephone: (630) 889-8800  
 Web: www.cashmanstahler.com



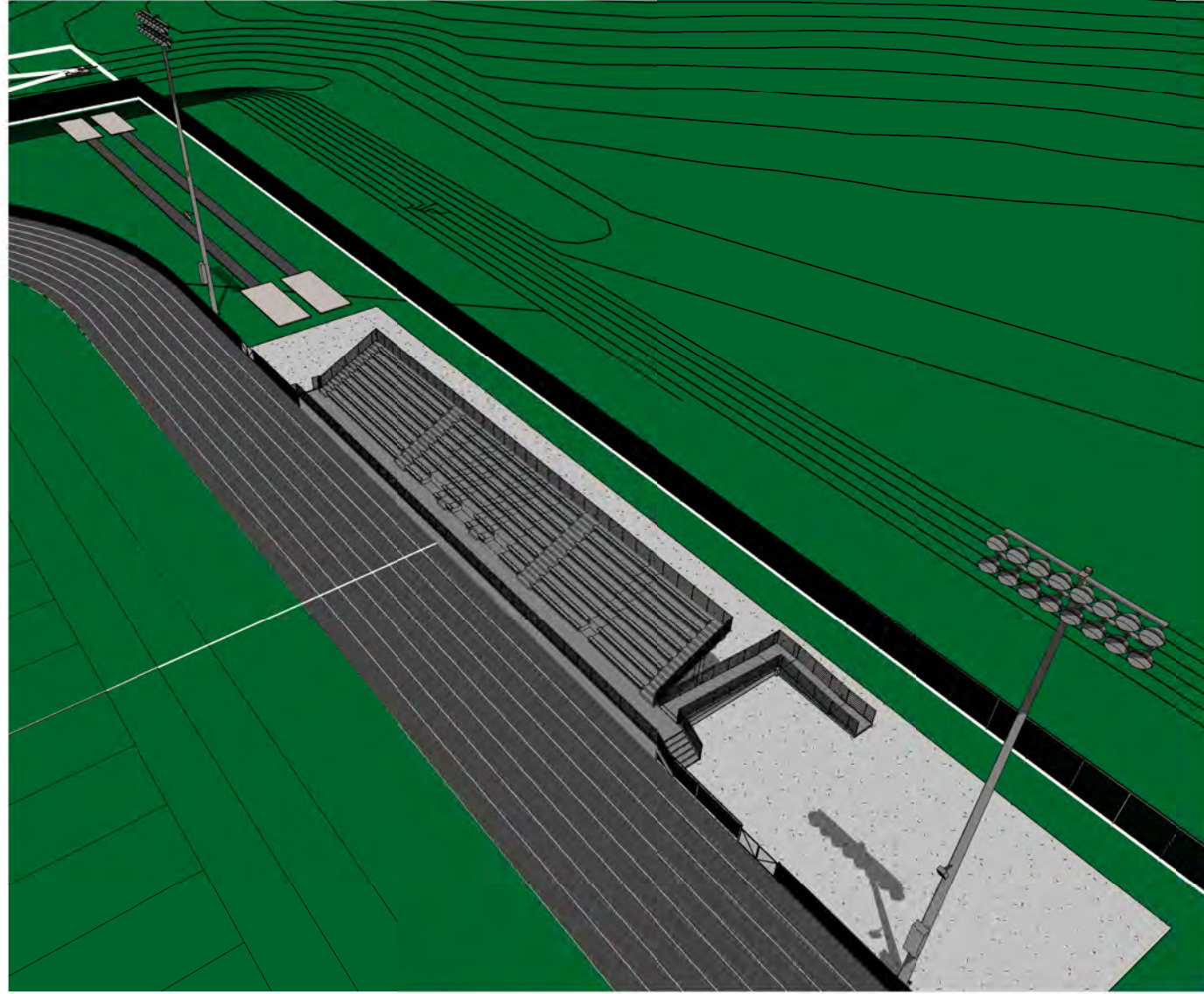
**Project:** Stadium Study - North Boone High School  
 17823 Poplar Grove Road, Poplar Grove, IL 61065

**Date:** 10/23/13

**Project:** CSG541

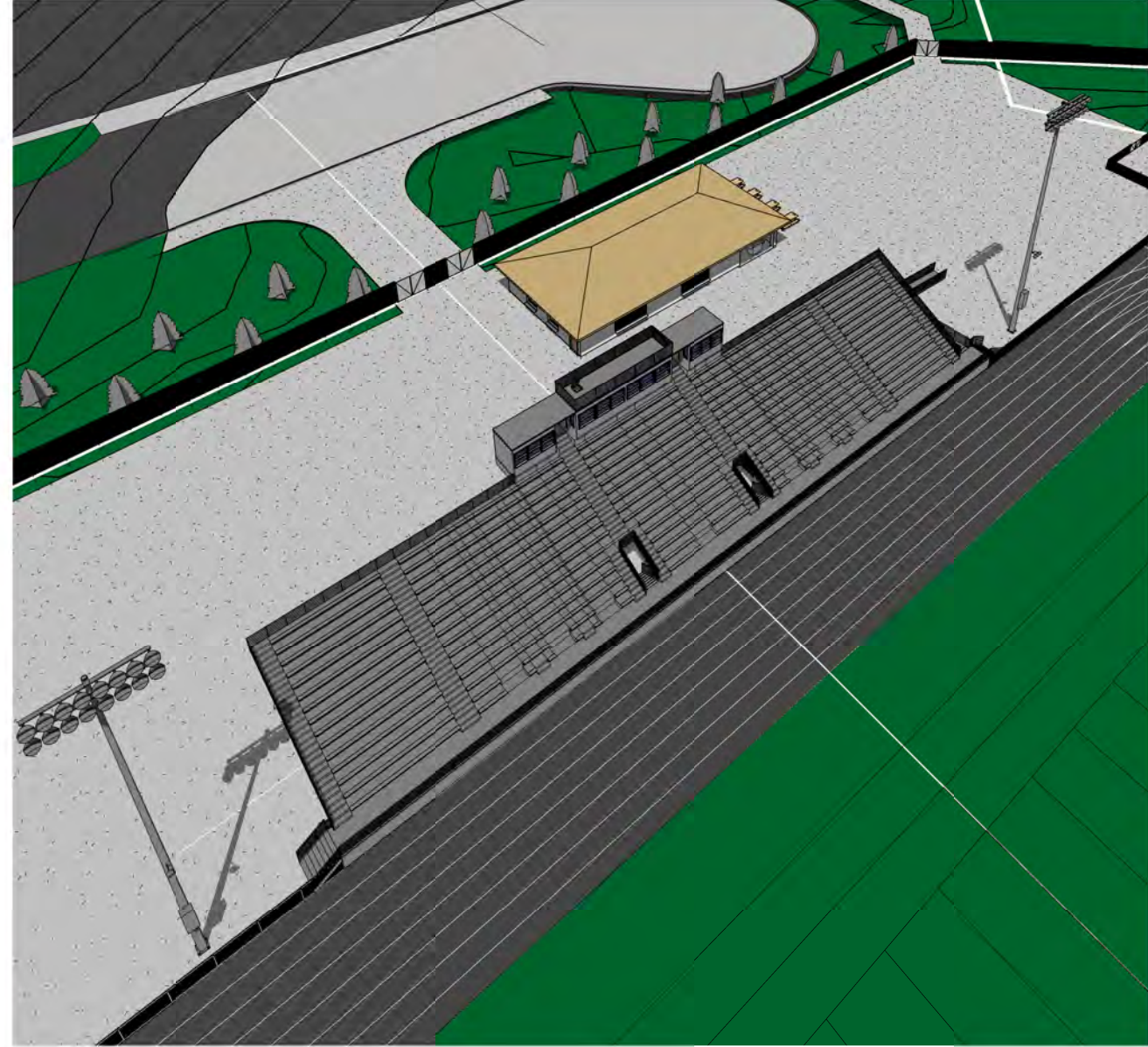
**Client:** North Boone Community Unit School District 200  
 6248 N. Boone Road, Poplar Grove, IL 61065

**A002**



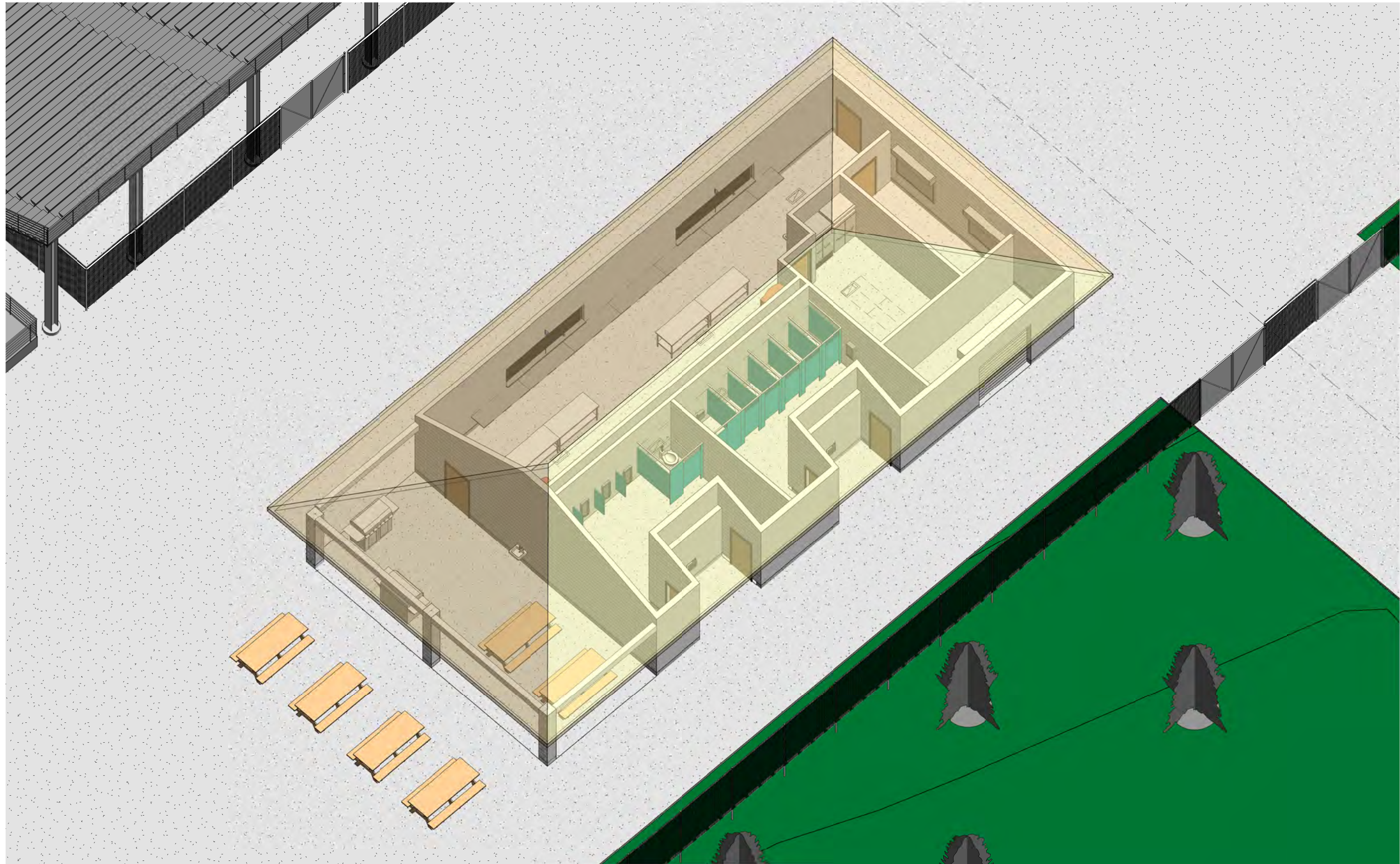
2

Visitor Bleachers



1

Home Bleachers & Concessions



1

Concessions Building from Northwest

**Cashman Stahl Group**  
1910 South Highland Avenue, Suite 310  
Lombard, Illinois 60148  
Telephone: (630) 889-8800  
Web: www.cashmanstahl.com



Project: **Stadium Study - North Boone High School**  
17823 Poplar Grove Road, Poplar Grove, IL 61065

Client: **North Boone Community Unit School District 200**  
6248 N. Boone Road, Poplar Grove, IL 61065

Date: 10/23/13

Project: CSG541

**A004**

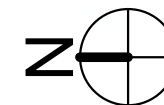
S 1° 00' 00" W  
2192.25'



1

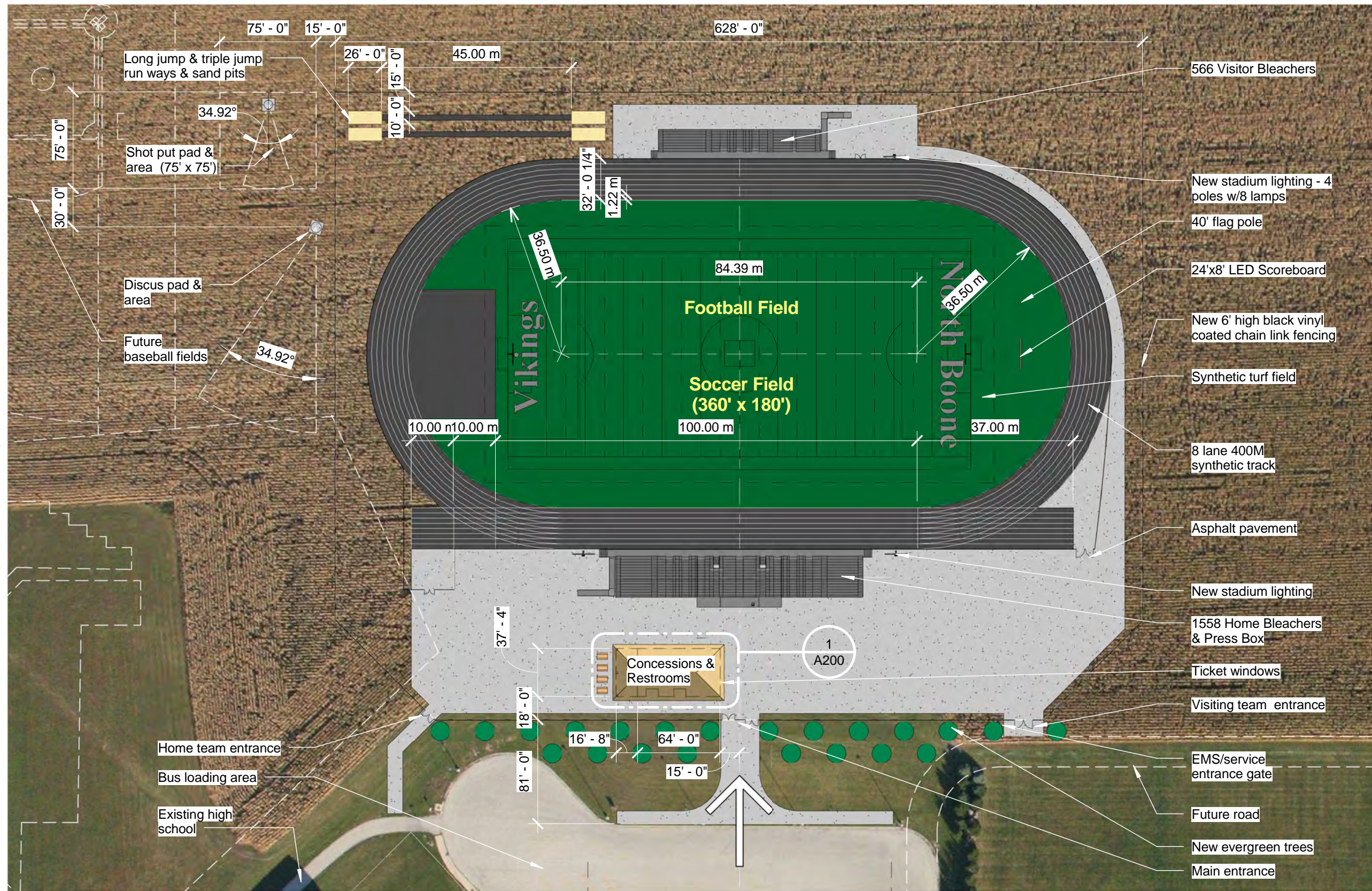
# Overall Site Plan - Proposed Stadium

1" = 250'-0"



<b>Cashman Stahler Group</b> 1910 South Highland Avenue, Suite 310 Lombard, Illinois 60148 Telephone: (630) 889-8800 Web: www.cashmanstahler.com	Project: <b>Stadium Study - North Boone High School</b> 17823 Poplar Grove Road, Poplar Grove, IL 61065	Date: 10/23/13 Project: CSG541
	Client: <b>North Boone Community Unit School District 200</b> 6248 N. Boone Road, Poplar Grove, IL 61065	<b>A100</b>





1

# Enlarged Site Plan - Proposed Stadium

1" = 80'-0"



Date: 10/23/13

Project: CSG541

**A101**

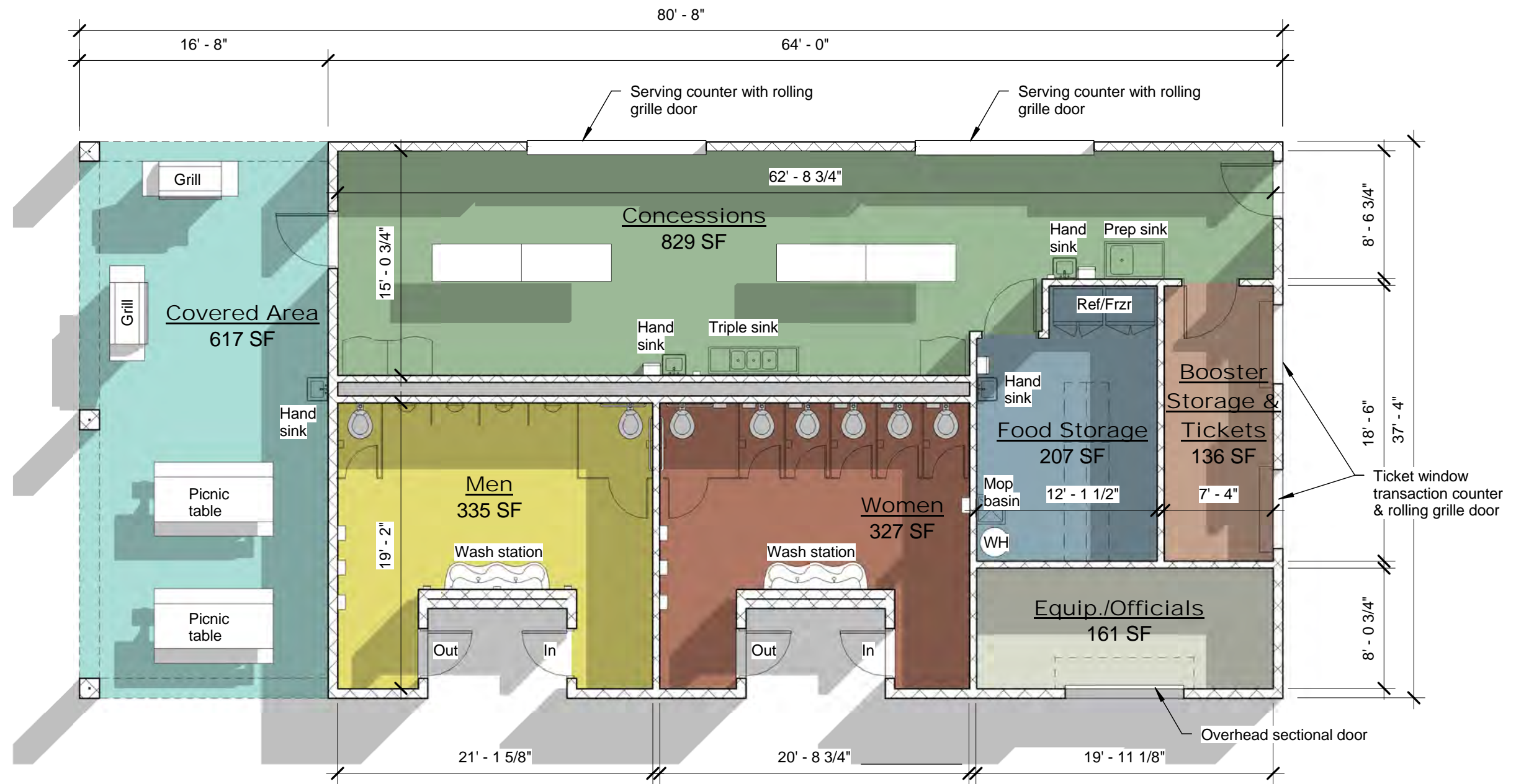
Project: **Stadium Study - North Boone High School**  
17823 Poplar Grove Road, Poplar Grove, IL 61065

Client: **North Boone Community Unit School District 200**  
6248 N. Boone Road, Poplar Grove, IL 61065

**Cashman Stahler Group**  
1910 South Highland Avenue, Suite 310  
Lombard, Illinois 60148

Telephone: (630) 889-8800  
Web: www.cashmanstahler.com

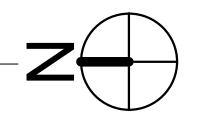




1

# Enlarged Concession Building Plan

1/8" = 1'-0"



Date: 10/23/13  
Project: CSG541

**A200**

Project: **Stadium Study - North Boone High School**  
17823 Poplar Grove Road, Poplar Grove, IL 61065

Client: **North Boone Community Unit School District 200**  
6248 N. Boone Road, Poplar Grove, IL 61065

**Cashman Stahler Group**  
1910 South Highland Avenue, Suite 310  
Lombard, Illinois 60148  
Telephone: (630) 889-8800  
Web: www.cashmanstahler.com

